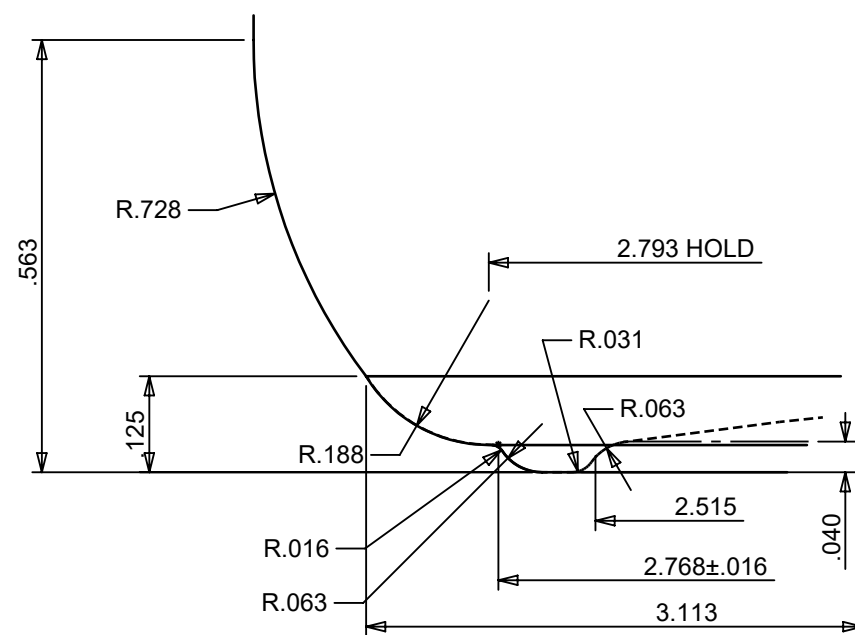
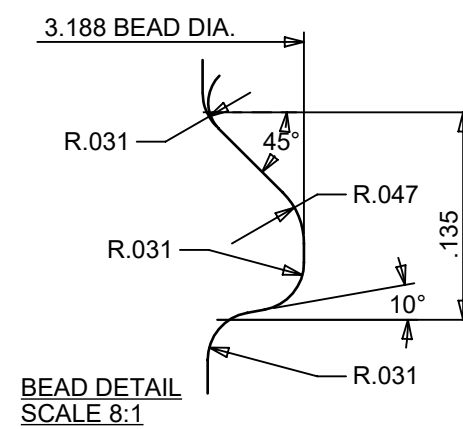
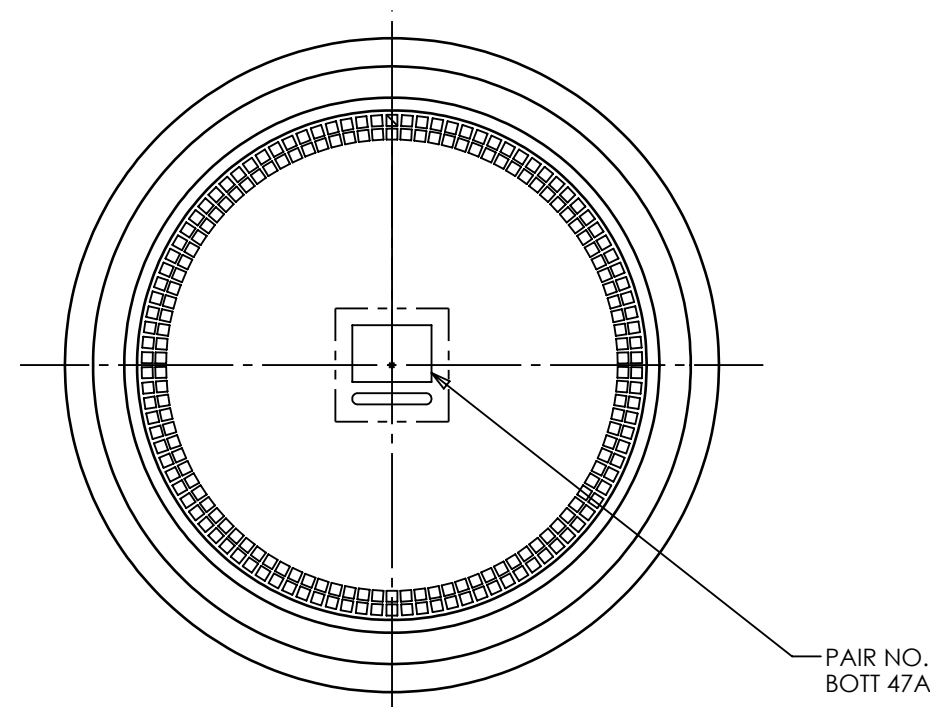
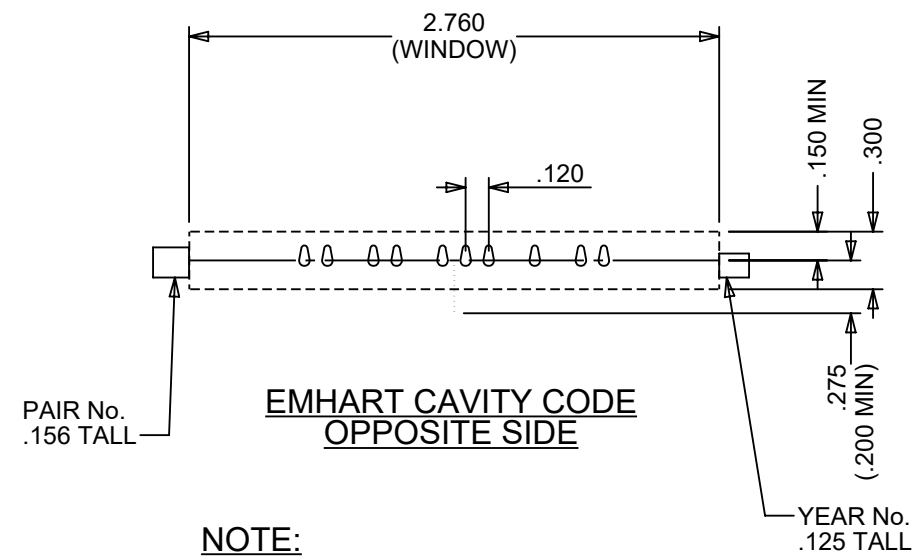
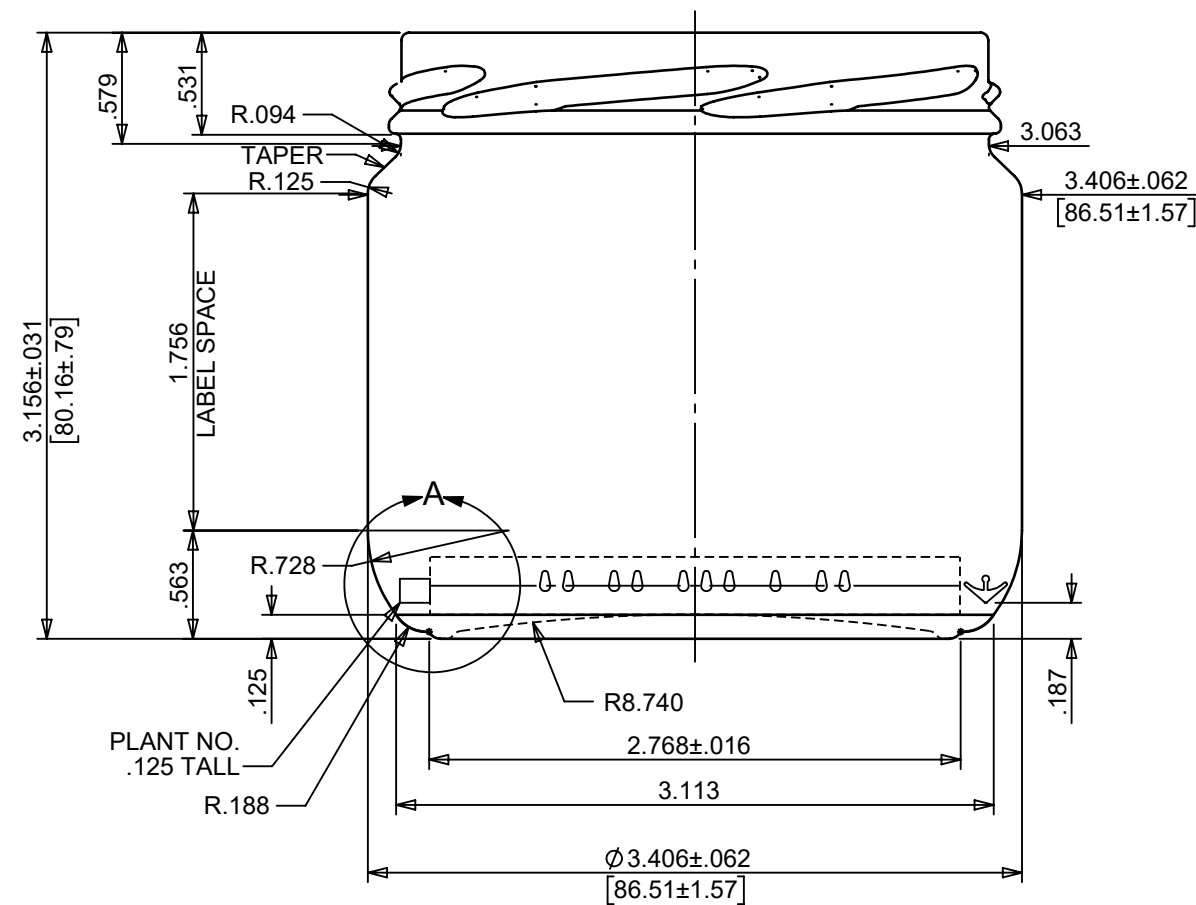


THIS DOCUMENT IS CONFIDENTIAL AND CONTAINS PROPRIETARY INFORMATION AND INTELLECTUAL PROPERTY INCLUDING, BUT NOT LIMITED TO, TRADEMARKS, COPYRIGHTS, TRADE SECRETS, AND KNOW-HOW OF ANCHOR GLASS. THIS INFORMATION MAY NOT BE USED, DISCLOSED OR REPRODUCED, IN WHOLE OR IN PART, WITHOUT THE PRIOR WRITTEN CONSENT OF ANCHOR GLASS. TITLE IN AND TO THIS DOCUMENT AND ALL INFORMATION CONTAINED HEREIN REMAINS AT ALL TIMES IN ANCHOR GLASS.

82MM-2040 A

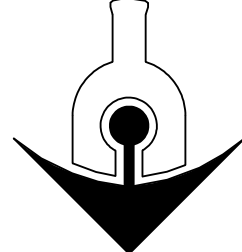


STACKING DETAIL  
SCALE 4 : 1

**NOTES:**  
 OVERALL HEIGHT: 3.156" (80.16mm)  
 LARGEST DIAMETER: 3.406" (86.51mm)  
 THEORETICAL TIP ANGLE > 45° 50'  
 THEORETICAL C.O.G: 1.281" UP FROM BASE OF BOTTLE

HEEL LETTERING: ROUND NOSE STYLE, RAISED .015"  
 KNURLING: BPK-180 TO APPEAR ON BEARING SURFACE  
 BOTTOM LETTERING: ROUND NOSE STYLE  
 TRADEMARK: No. 00

REV	DESCRIPTION	DATE	APPROVED
8	RE-DRAWN IN SOLIDWORKS	2/6/2026	J.E.T
7	UPDATED TO MATCH SET #6 MOULD ENGINEERING	12/9/25	SODE
6	UPDATED TO STANDARDS	2/2/15	D.T.
5	REVISED FINISH SPECIFICATION, WAS 82MM-2040 C & ADDED BEAD DETAIL. UPDATED DWG PER A.G.C.C STD'S	01/23/04	P.S.
4	EMHART POWERS CODING WAS IN ONE HALF ONLY, REVISED HEEL LETTERING TO SUIT	01/19/96	D.B.
3	BODY DIAMETER WAS 3.375" & HEEL RADIUS WAS .784"	01/10/96	D.B.
2	ADDED "C" & REMOVED U/C "A" FROM FINISH	11/16/95	D.B.
1	ADDED ITEM NO. & "A" TO FINISH	10/17/95	D.B.
REV	DESCRIPTION	DATE	APPROVED
REVISIONS			



# ANCHOR GLASS CONTAINER

TAMPA, FLORIDA

DESIGN/ENGINEERING	DESCRIPTION:
SIZES & SPECIFICATIONS SHOWN ARE IDEAL ACTUAL SAMPLES WILL DETERMINE SIZES	GENERAL SALE
SCALE: 1:2      SHAPE CODE: 10	12 OZ JAR
OVERFLOW: 11.960± .188 FL OZS 353.69± 9.26 MLS	ITEM No.: <b>21239</b>
NOMINAL CAPACITY:	DATE: 2.5.2026
WEIGHT: 6.500±.313 OZS 184.3±8.87 GRAMS	DRN BY: J.TRIPLETT
PART No:	STATUS:
PROJECT No: 17421	DWG No: <b>C-90629</b>
REFERENCES: 19609	