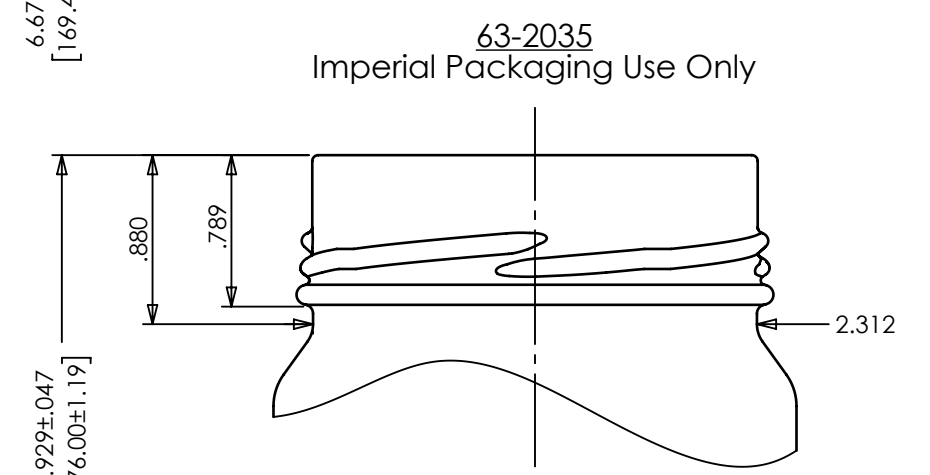
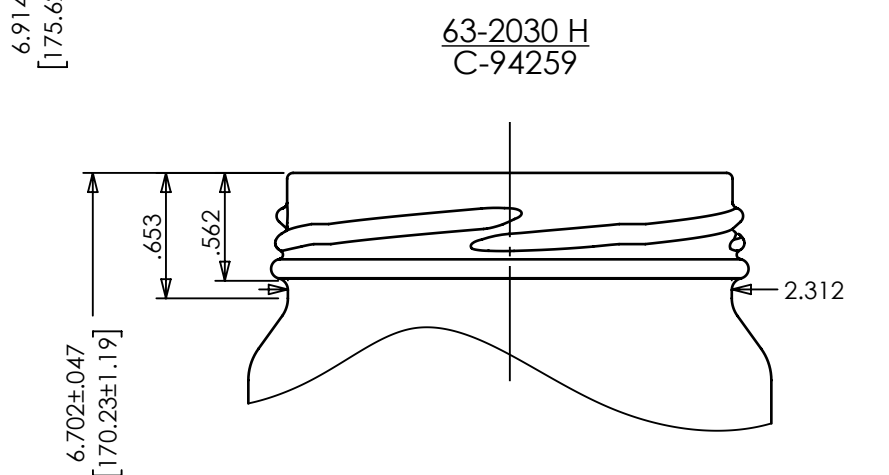
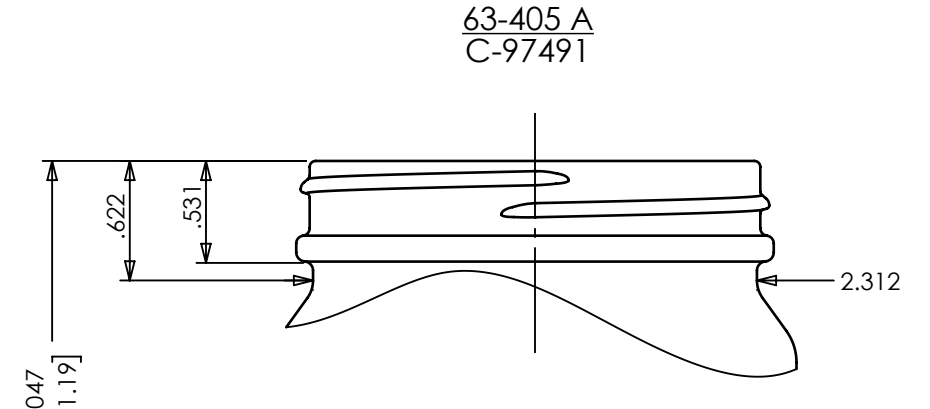
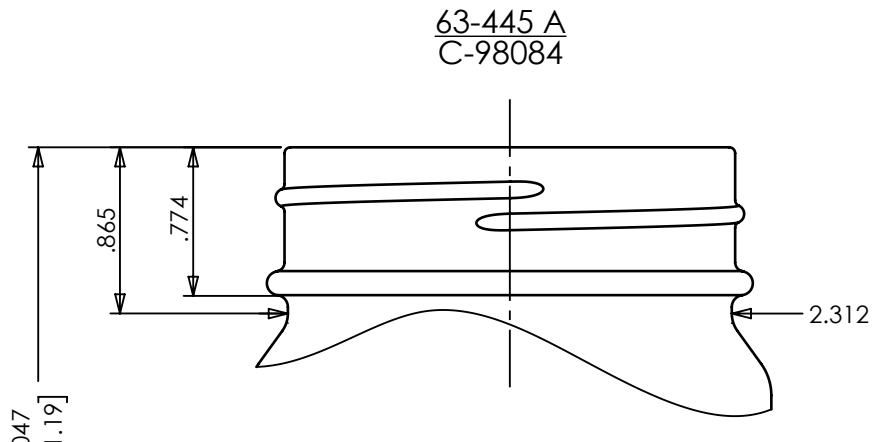
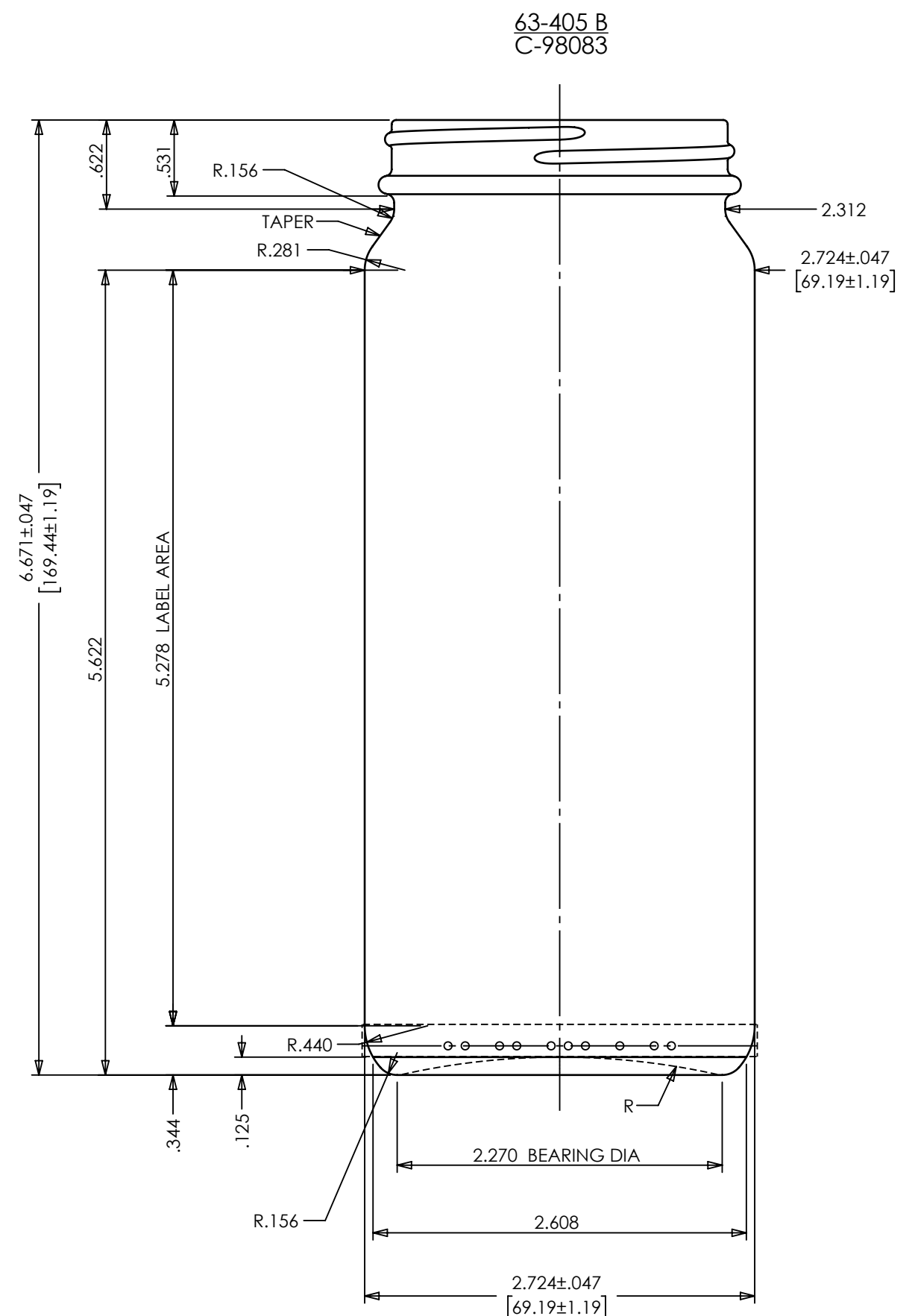
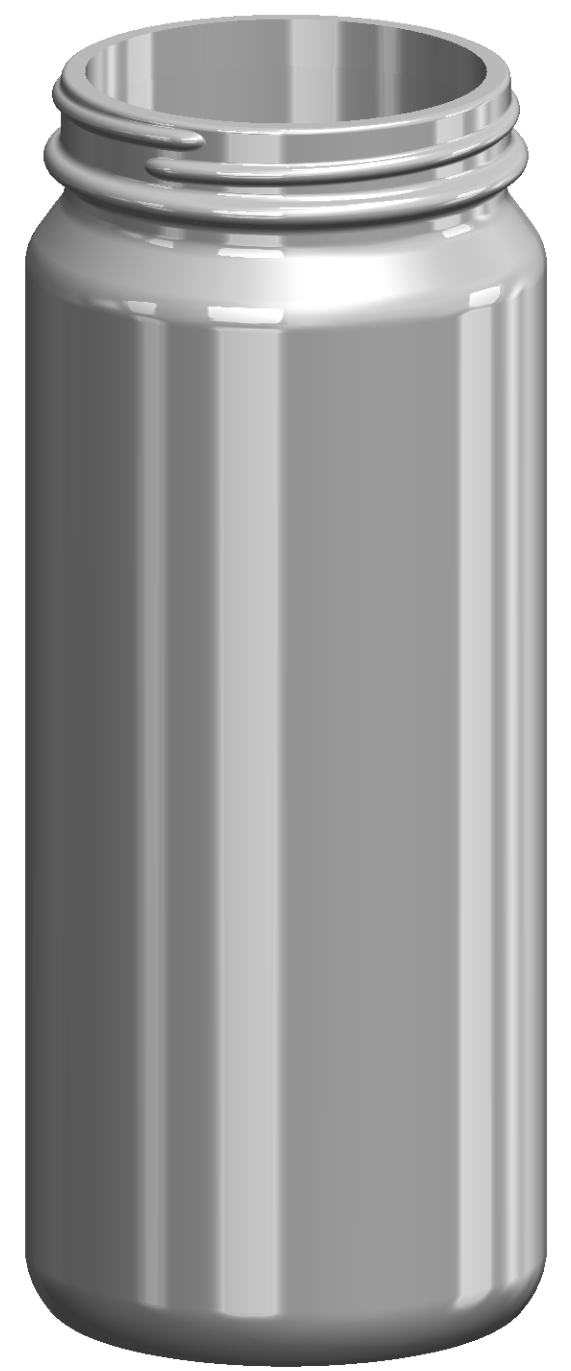
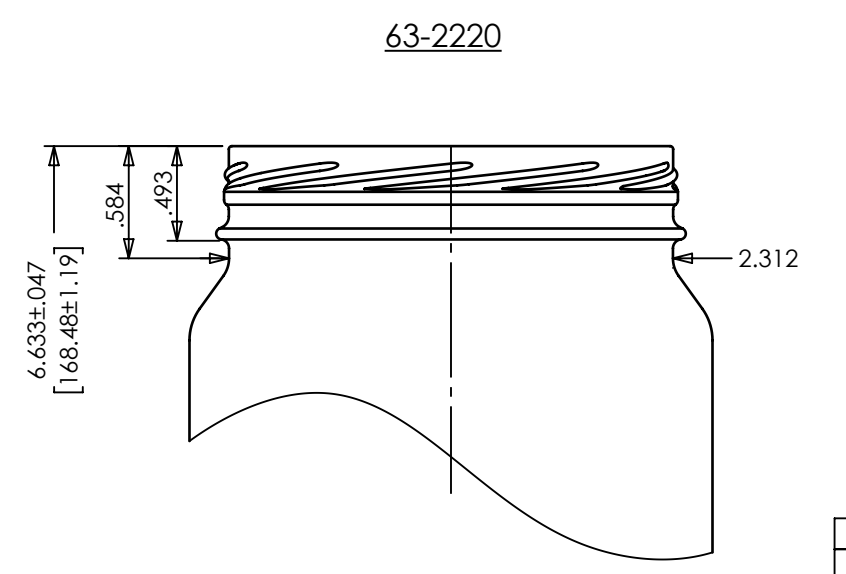
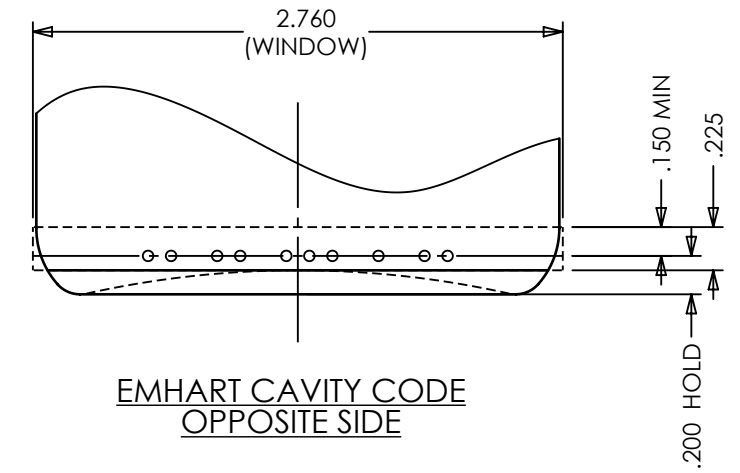


THIS DOCUMENT IS CONFIDENTIAL AND CONTAINS PROPRIETARY INFORMATION AND INTELLECTUAL PROPERTY INCLUDING, BUT NOT LIMITED TO, TRADEMARKS, COPYRIGHTS, TRADE SECRETS, AND KNOW-HOW OF ANCHOR GLASS. THIS INFORMATION MAY NOT BE USED, DISCLOSED OR REPRODUCED, IN WHOLE OR IN PART, WITHOUT THE PRIOR WRITTEN CONSENT OF ANCHOR GLASS. TITLE IN AND TO THIS DOCUMENT AND ALL INFORMATION CONTAINED HEREIN REMAINS AT ALL TIMES IN ANCHOR GLASS.

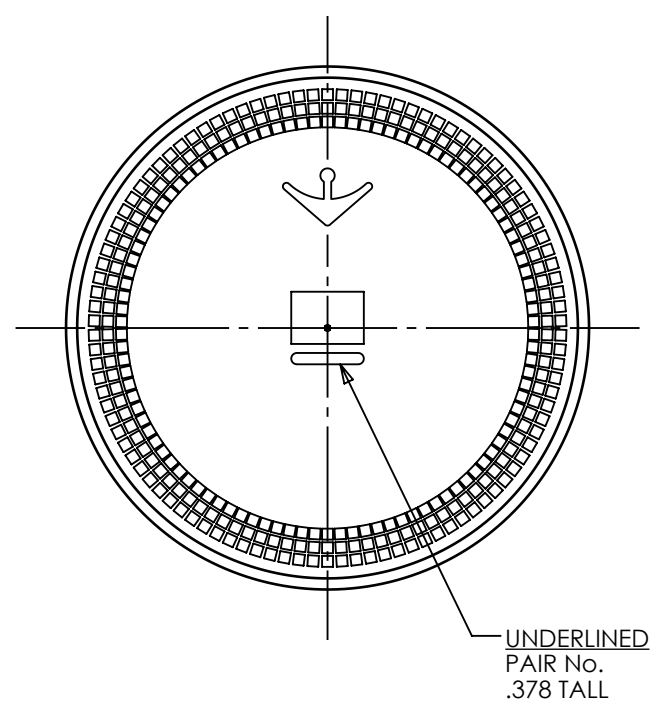


NOTE:
IF EMHART CAVITY IDENTIFICATION DOT CODE IS USED, THEY WILL APPEAR TWICE, CENTERED ONCE IN EACH HALF AS SHOWN. USE 10 DOT CODE ONLY.



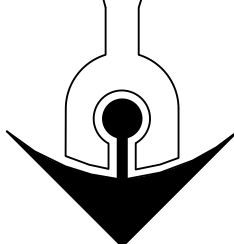
| FINISH | OVERFLOW | WEIGHT |
|-----------|----------------------|----------------------|
| 63-405 | 16.870 ± .250 FL OZS | 9.320 ± .500 OZS |
| | 498.90 ± 7.39 MLS | 264.22 ± 14.17 GRAMS |
| 63-445 | 17.360 ± .250 FL OZS | 9.520 ± .500 OZS |
| | 513.40 ± 7.39 MLS | 270.00 ± 14.17 GRAMS |
| 63-405 A | 16.870 ± .250 FL OZS | 9.320 ± .500 OZS |
| | 498.90 ± 7.39 MLS | 264.22 ± 14.17 GRAMS |
| 63-2035 | 17.274 ± .250 FL OZS | 9.620 ± .500 OZS |
| | 510.85 ± 7.36 MLS | 272.72 ± 14.17 GRAMS |
| 63-2030 H | 16.870 ± .250 FL OZS | 9.320 ± .500 OZS |
| | 498.90 ± 7.39 MLS | 264.22 ± 14.17 GRAMS |
| 63-2220 | 16.750 ± .250 FL OZS | 9.309 ± .500 OZS |
| | 495.36 ± 7.39 MLS | 263.91 ± 14.17 GRAMS |

NOTES:
OVERALL HEIGHT: 6.914" (175.62mm)
LARGEST DIAMETER: 2.724" (69.19mm)
THEORETICAL TIP ANGLE > 20° 27'
THEORETICAL C.O.G: 3.043" UP FROM BASE OF BOTTLE



KNURLING: BPK-180 KNURL TO APPEAR ON BEARING SURFACE
BOTTOM PAIR No.: SEE DRAWING C-97764 FOR DETAILS
TRADEMARK: No. 1

| REV | DESCRIPTION | DATE | APPROVED |
|-----|---|----------|------------|
| 8 | ADDED "IMPERIAL PACKAGING USE ONLY" UNDER FINISH 63-2035 | 3/12/25 | D. MYRICK |
| 7 | ADDED 63-2220 FINISH | 8/5/22 | J. TERHAAR |
| 6 | ADDED 63-2030 H FINISH | 6/29/22 | J. TERHAAR |
| 5 | ADDED 63-2035 FINISH | 12/11/20 | S.THOMAS |
| 4 | UPDATED FINISH DESIGNATIONS FOR 63-405 B & 63-445 A | 7/24/19 | S.THOMAS |
| 3 | INCREASED 63-445 FINISH OVERFLOW FROM 17.040 FL OZ PER PRODUCTION | 7/23/19 | S.THOMAS |
| 2 | INCREASED DIAMETER FROM 2.708 TO 2.724 PER UNIT SAMPLE & REMOVED TENTATIVE NOTE | 4/3/19 | S.THOMAS |
| 1 | ADDED 63-445 FINISH | 1/4/19 | S.THOMAS |



ANCHOR GLASS CONTAINER

DESIGN/ENGINEERING TAMPA, FLORIDA

| | | | |
|---|----------------|---|--|
| SIZES & SPECIFICATIONS SHOWN ARE IDEAL ACTUAL SAMPLES WILL DETERMINE SIZES | | DESCRIPTION: | |
| SCALE: 1:1 | SHAPE CODE: 10 | GENERAL SALE 16 FL OZ STRAIGHT SIDED JAR | |
| OVERFLOW: SEE CHART | | | |
| NOMINAL CAPACITY: | | ITEM No.: 21791 | |
| WEIGHT: SEE CHART | | DATE: 1/2/19 | |
| PART No: - | | DRN BY: S. Thomas | |
| PROJECT No: 21376 | | STATUS: DRAFT | |
| REFERENCES: #14918 | | DWG No: B-97861 | |