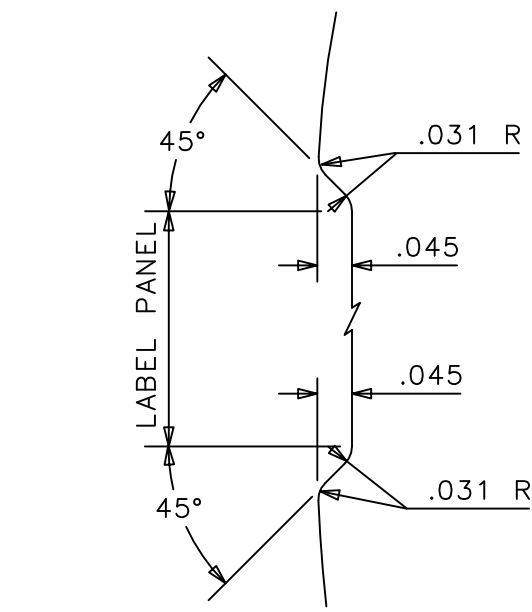
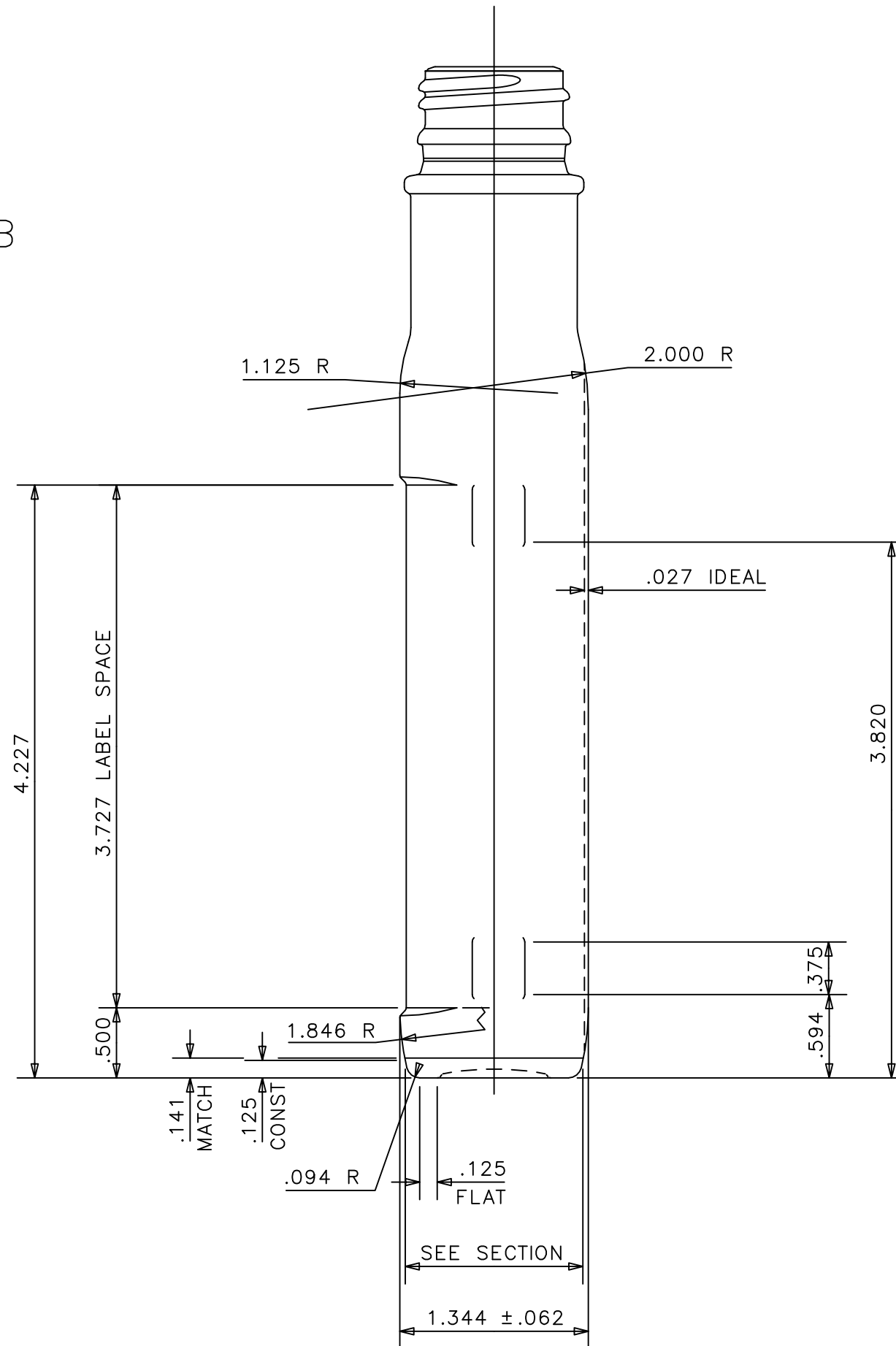
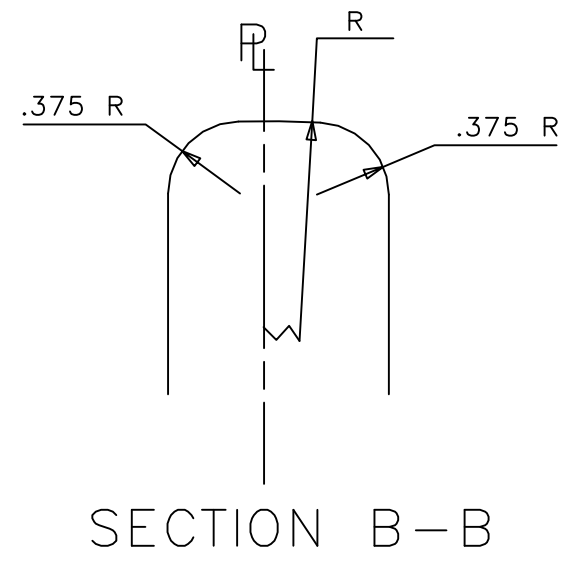
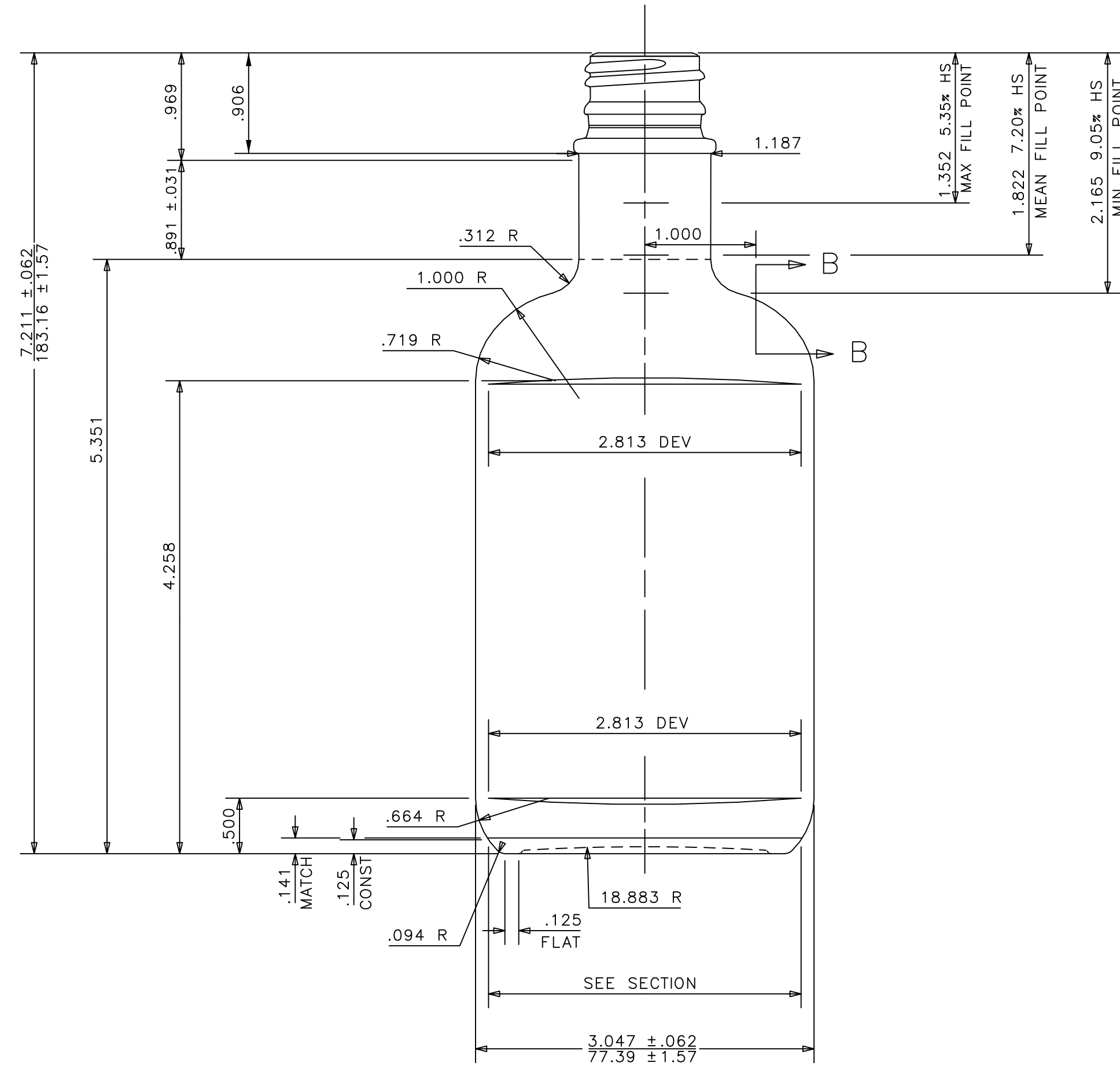
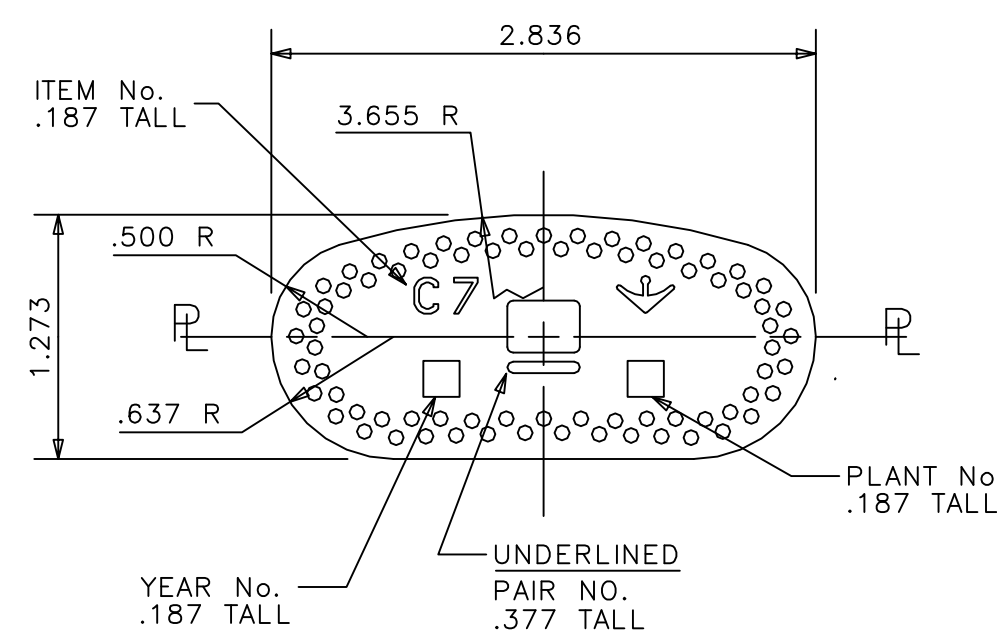
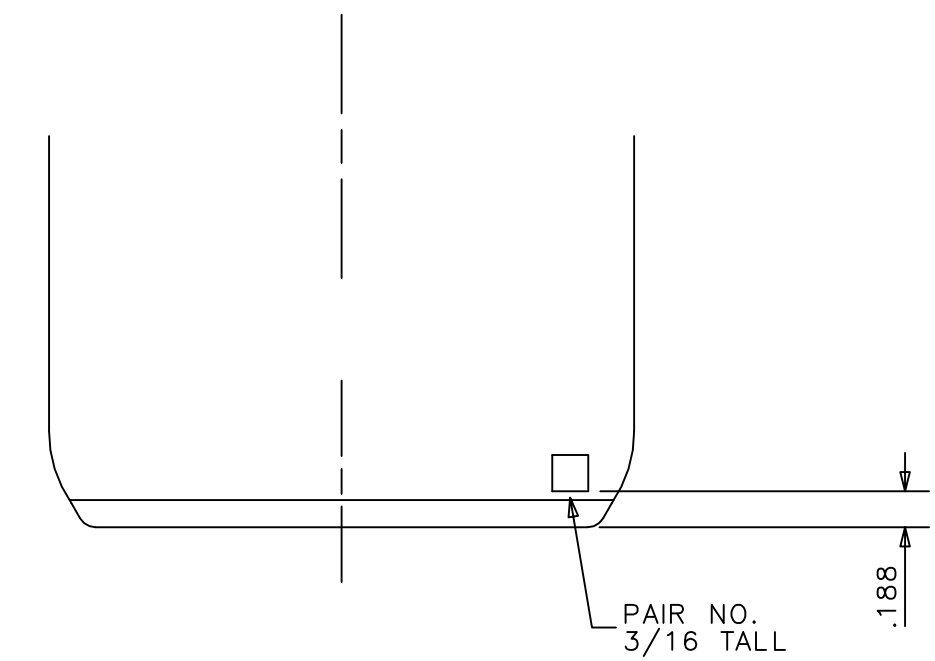


28-3500 AE  
C-84229

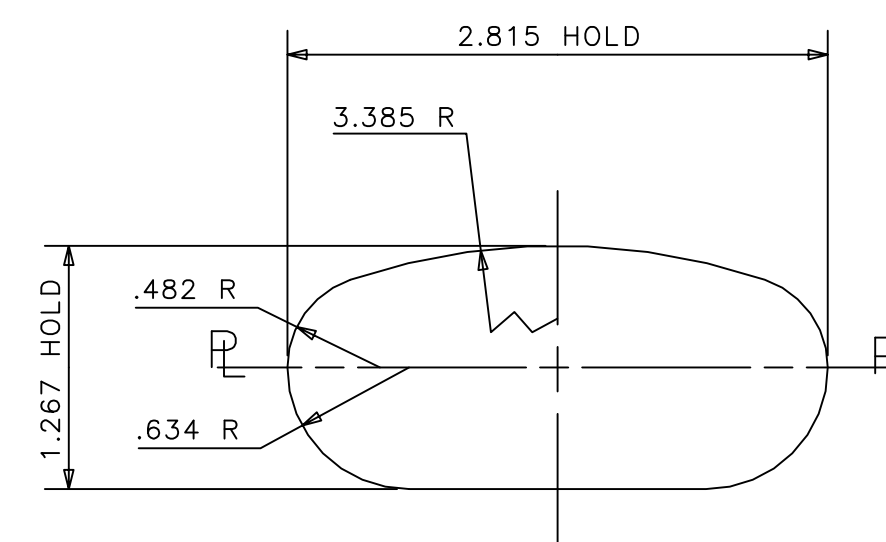


LABEL INDENT DETAIL  
SCALE: 4 TO 1

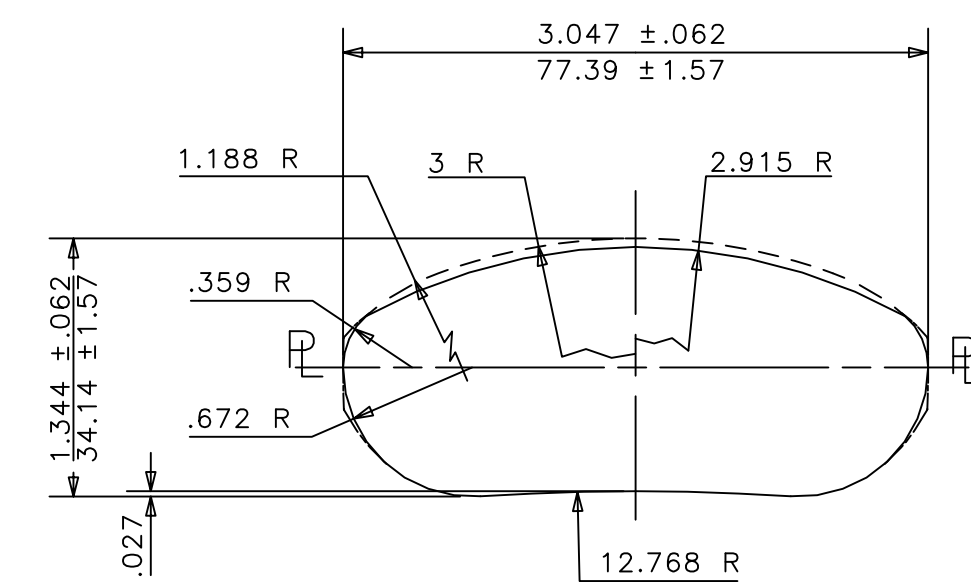


SECTION AT .141 UP  
MOULD & BOTTOM MATCH

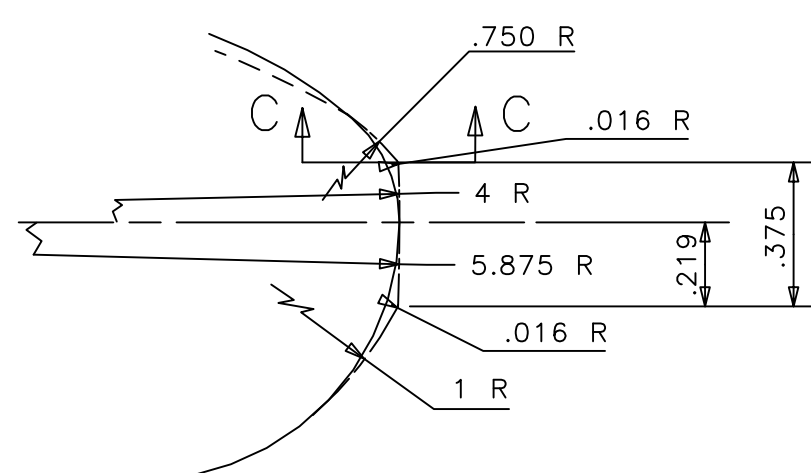
NOTES:  
BUMPER PADS: TO APPEAR AT SHOULDER AND HEEL ON EDGES AS SHOWN, AND TO BLEND SOFTLY INTO BODY CONTOUR.  
CAPACITY LETTERING: NOT INCLUDED ON THIS BOTTLE, CUSTOMER LABEL MUST INCLUDE NET CONTENTS STATEMENT.  
PROFILE AT .125 UP REQUIRED AND MUST BE HELD FOR KRONES PLATFORM.  
KNURLING: B.P.M.R.-12 TO APPEAR ON BEARING SURFACE  
TRADEMARK: #0  
BOTTOM LETTERING: TO BE ROUND NOSED STYLE.  
PAIR NUMBER TO BE FLAT FACED. SEE DRAWING C-97764 FOR DETAILS



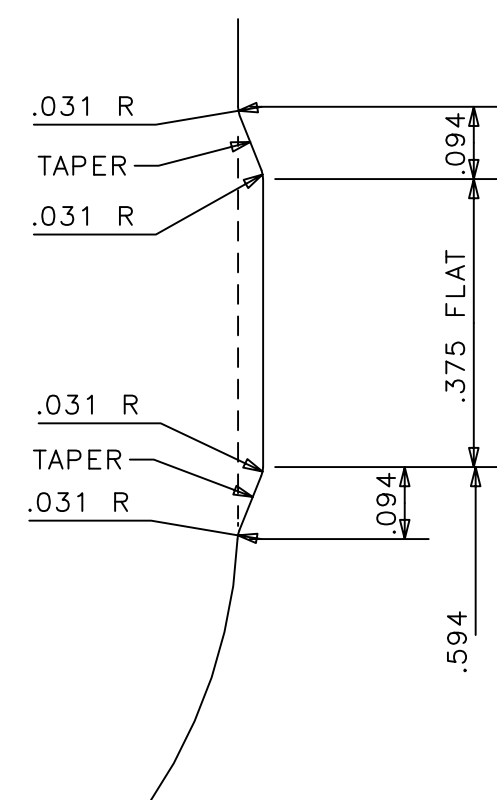
SECTION AT .125 UP



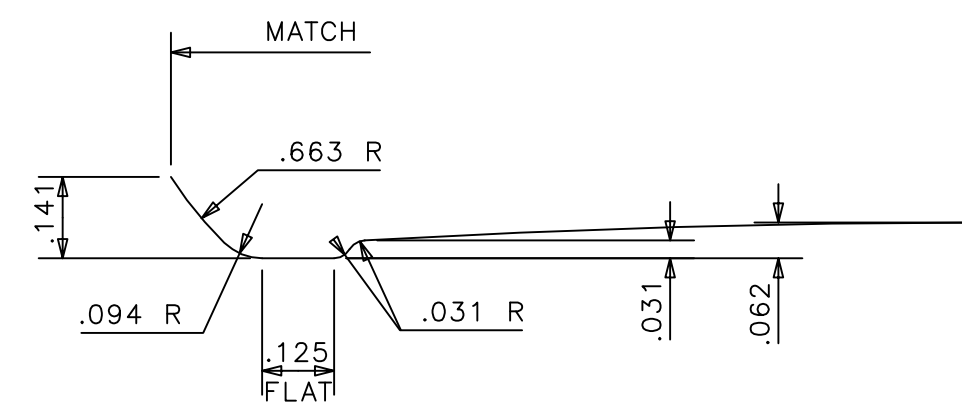
TYP SECTION THRU BODY



BUMPER PAD DETAIL  
SCALE: 2 TO 1



SECTION C-C  
SCALE: 4 TO 1



BOTTOM CAVITY DETAIL  
SCALE: 3 TO 1

BLOW MOULD TO 907C6

NOTE!  
OVERALL HEIGHT ----- 7.211"(183.16mm)  
LARGEST WIDTH ----- 3.047"(77.39mm)  
LARGEST THICKNESS ----- 1.344"(34.14mm)

REVISIONS	
5. ADDED WEIGHT TOLERANCE	SODE 6/1/22
4. UPDATED PAIR NUMBER ON BOTTOM	7/27/18 DT
3. ADDED GENERAL SALE TO TITLE BLOCK	2-12-13 DT
2. REMOVED "TENTATIVE DESIGN" NOTE AND ADJUSTED FILL POINTS PER SAMPLING	3/25/10 SODE
1. REVISED FILL POINT HEIGHTS	11/10/09 SODE

SIZES & SPECIFICATIONS SHOWN ARE IDEAL - ACTUAL SAMPLES WILL DETERMINE SIZES.		<p>ANCHOR GLASS CONTAINER</p> <p>DESIGN/ENGINEERING TAMPA, FLORIDA</p>
SCALE: NOTED	SHAPE CODE: 49	
OVERFLOW:	7.250 ± .125 FL OZ 214.4 ± 3.70 ML	<p>GENERAL SALE</p> <p>200ml FLASK</p> <p>ITEM No. 907C7</p>
FILL POINT OR NOMINAL CAPACITY:	6.763 ± .125 FL OZ 200.0 ± 3.70 ML	
WEIGHT: 7.500 ± .375 OZ 212.6 ± 10.6 G	DATE 11/02/09	DRN. BY J. Sode
PROJECT No. 20381 BB	DWG. No.: A-95804	
REF: 0-1 L-2491		