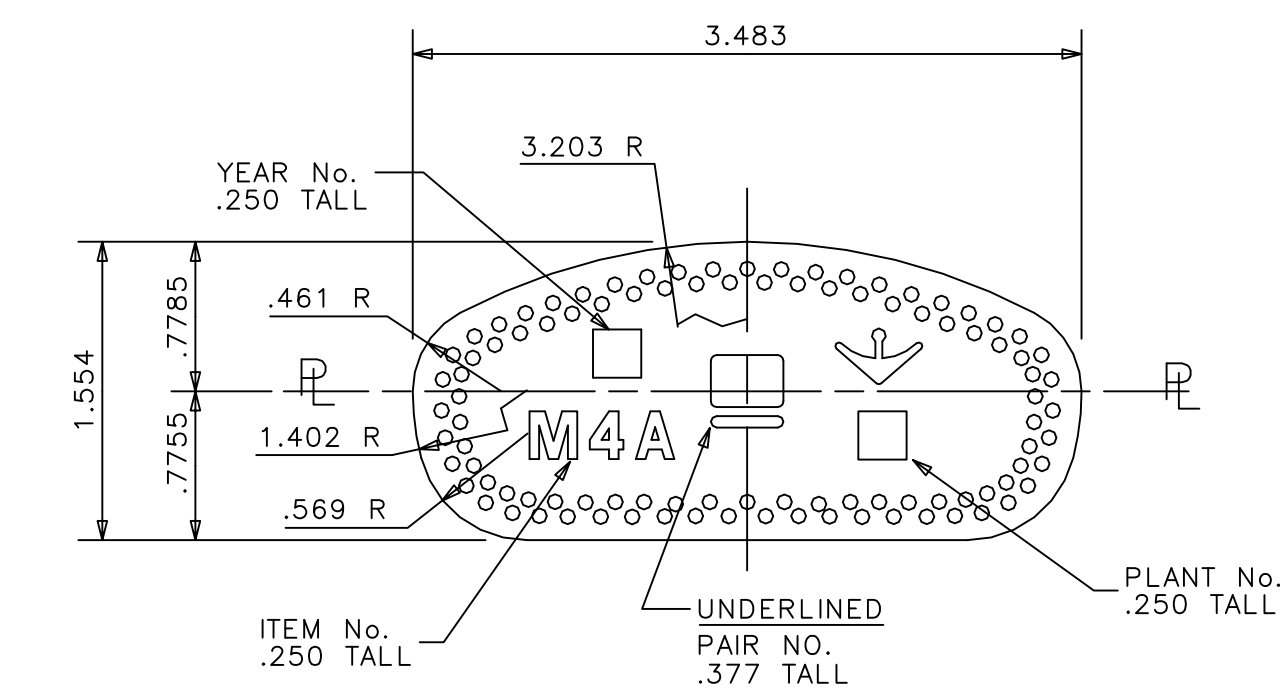
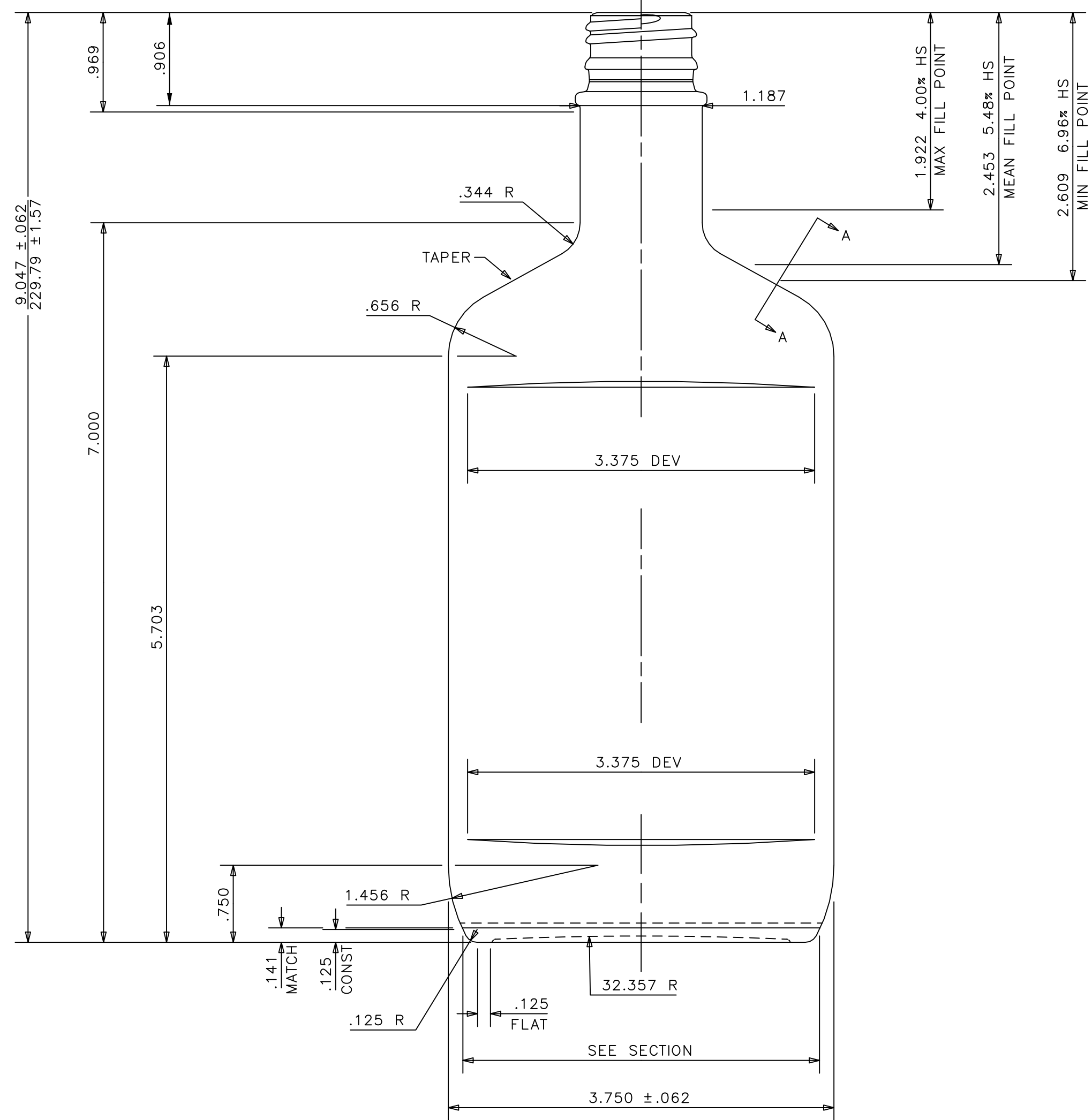
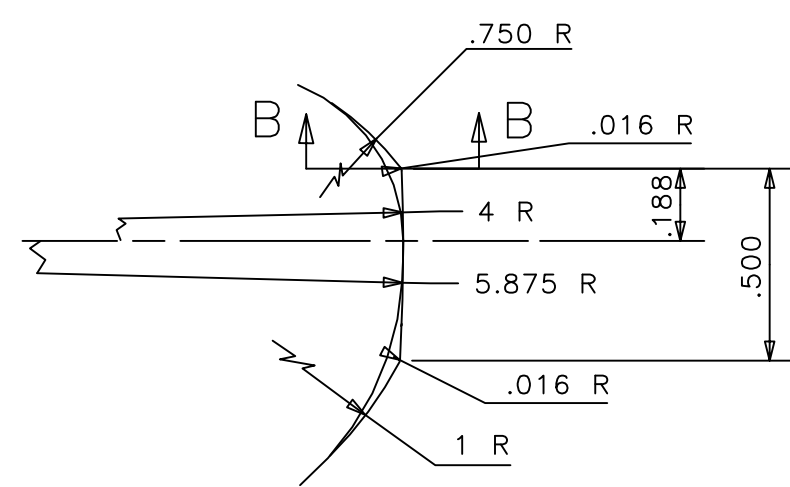


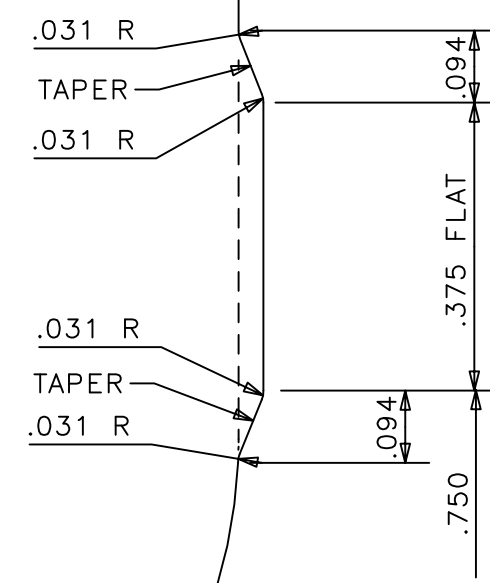
28-3500 AE
C-84229



SECTION AT .141 UP
MOULD & BOTTOM MATCH

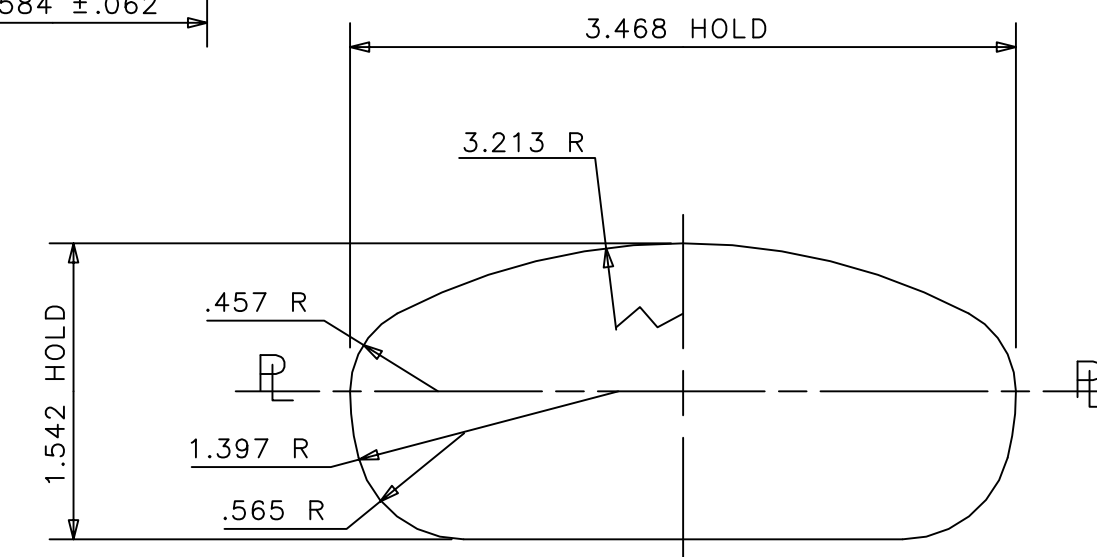
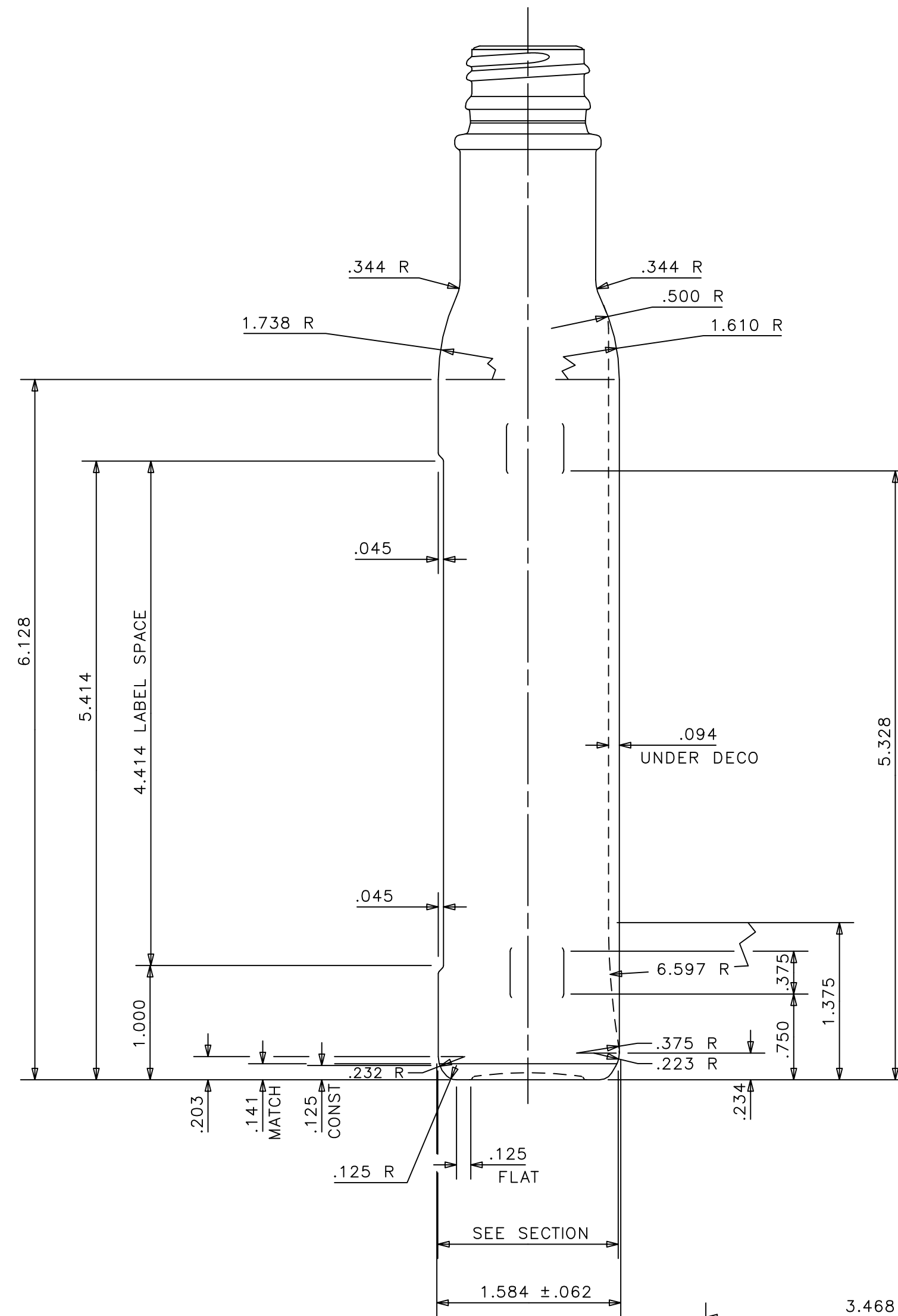


BUMPER PAD DETAIL
SCALE: 2 TO 1

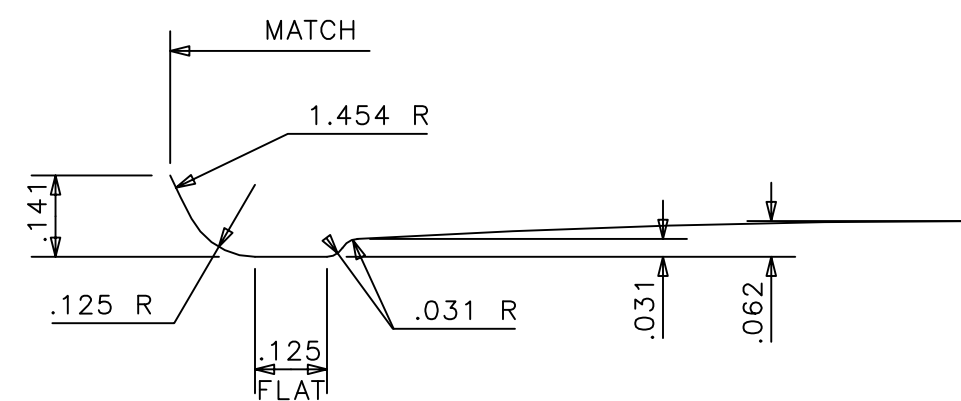


SECTION B-B
SCALE: 4 TO 1

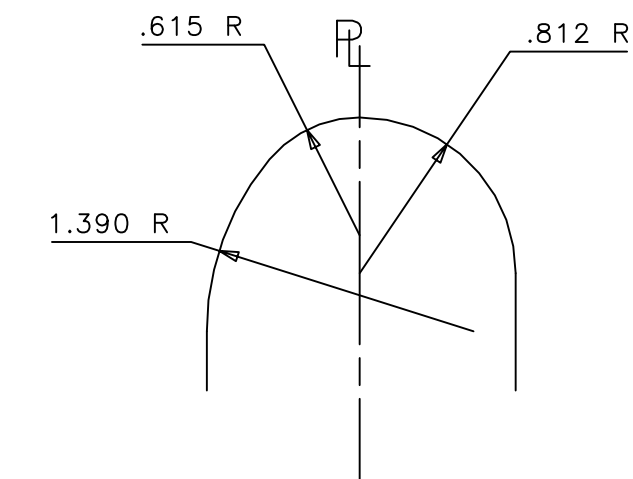
NOTES:
BUMPER PADS: TO APPEAR AT SHOULDER AND HEEL ON EDGES AS SHOWN, AND TO BLEND SOFTLY INTO BODY CONTOUR.
CAPACITY LETTERING: NOT INCLUDED ON THIS BOTTLE, CUSTOMER LABEL MUST INCLUDE NET CONTENTS STATEMENT.
PROFILE AT .125 UP REQUIRED AND MUST BE HELD FOR KRONES PLATFORM.
KNURLING: B.P.M.R.-12 TO APPEAR ON BEARING SURFACE
TRADEMARK: #0
BOTTOM LETTERING: TO BE ROUND NOSED STYLE.
PAIR NUMBER TO BE FLAT FACED. SEE DRAWING C-97764 FOR DETAILS



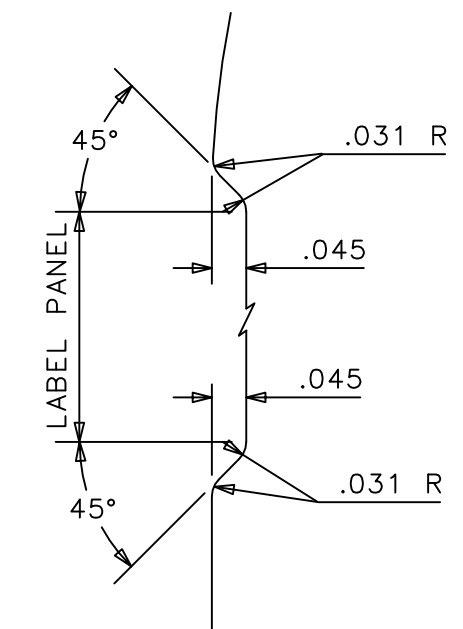
SECTION AT .125 UP



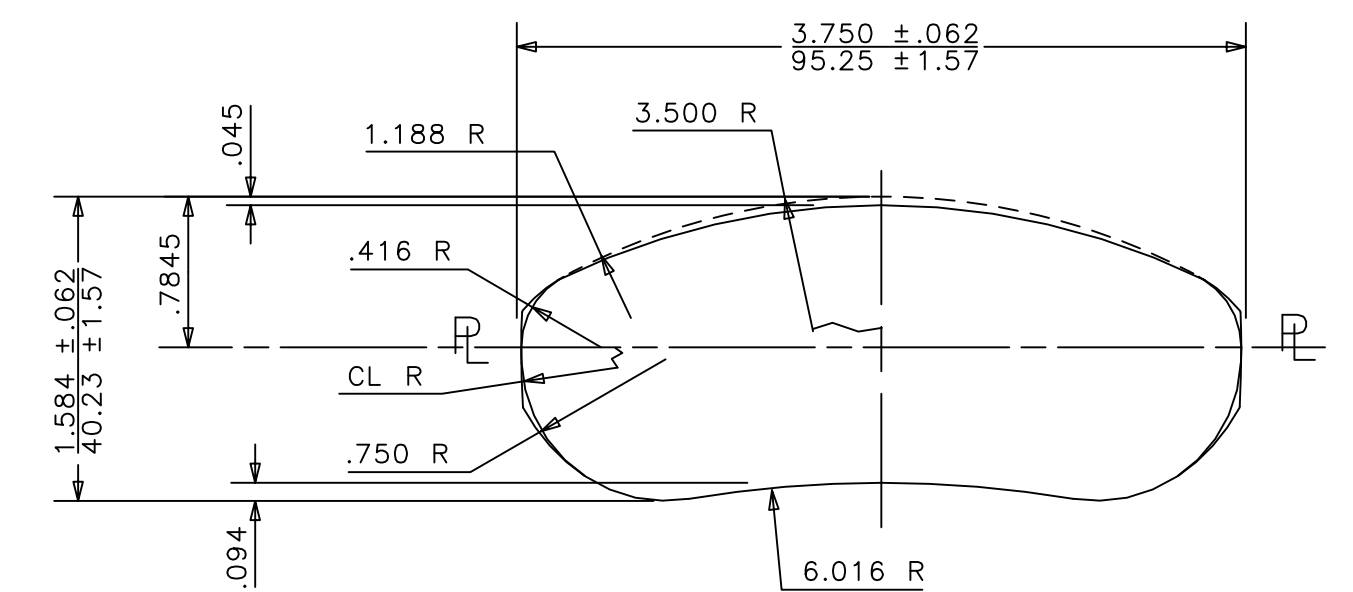
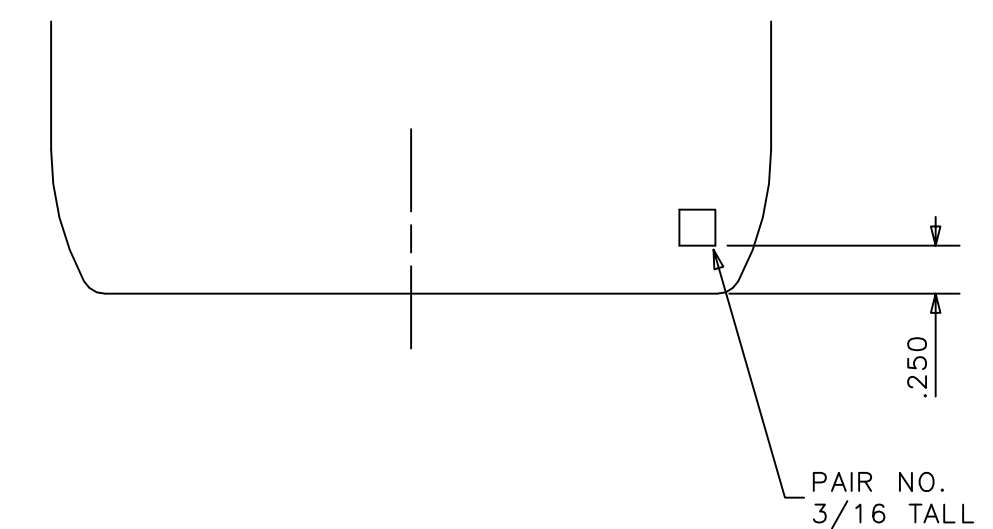
BOTTOM CAVITY DETAIL
SCALE: 3 TO 1



SECTION A-A



LABEL INDENT DETAIL
SCALE: 4 TO 1



TYP SECTION THRU BODY

BLOW MOULD TO 913M3

NOTE!
OVERALL HEIGHT ----- 9.047"(229.79mm)
LARGEST WIDTH ----- 3.750"(95.25mm)
LARGEST THICKNESS ----- 1.584"(40.23mm)

3. UPDATED PAIR NUMBER ON BOTTOM - REVISED LOCATION OF BOTTOM LETTERING FOR CLEAR AREA	7/27/18 DT
2. MADE GENERAL SALE	2/12/15 SODE
1. WEIGHT WAS 14.400 OZ IN ERROR	3/14/11 SODE
REVISIONS	

SIZES & SPECIFICATIONS SHOWN ARE IDEAL - ACTUAL SAMPLES WILL DETERMINE SIZES.	
SCALE: NOTED	SHAPE CODE: 49
OVERFLOW: 13.375 ± .187 FL OZ 395.53 ± 5.53 ML	
FILL POINT OR NOMINAL CAPACITY: 12.680 ± .187 FL OZ 375.00 ± 5.53 ML	
WEIGHT: 13.781 OZ 390.73 GRAMS	
PROJECT No. 20386 BB	
REF ITEM 913M4	

ANCHOR GLASS CONTAINER

DESIGN/ENGINEERING TAMPA, FLORIDA

GENERAL SALE
375ml PLAIN FLASK

ITEM No. **913M4A**
DATE 3-01-2011 DRN. BY *J. Fode*

DWG. No.: **A-96039**