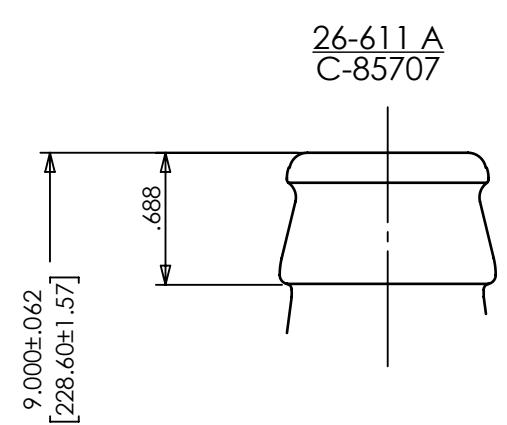
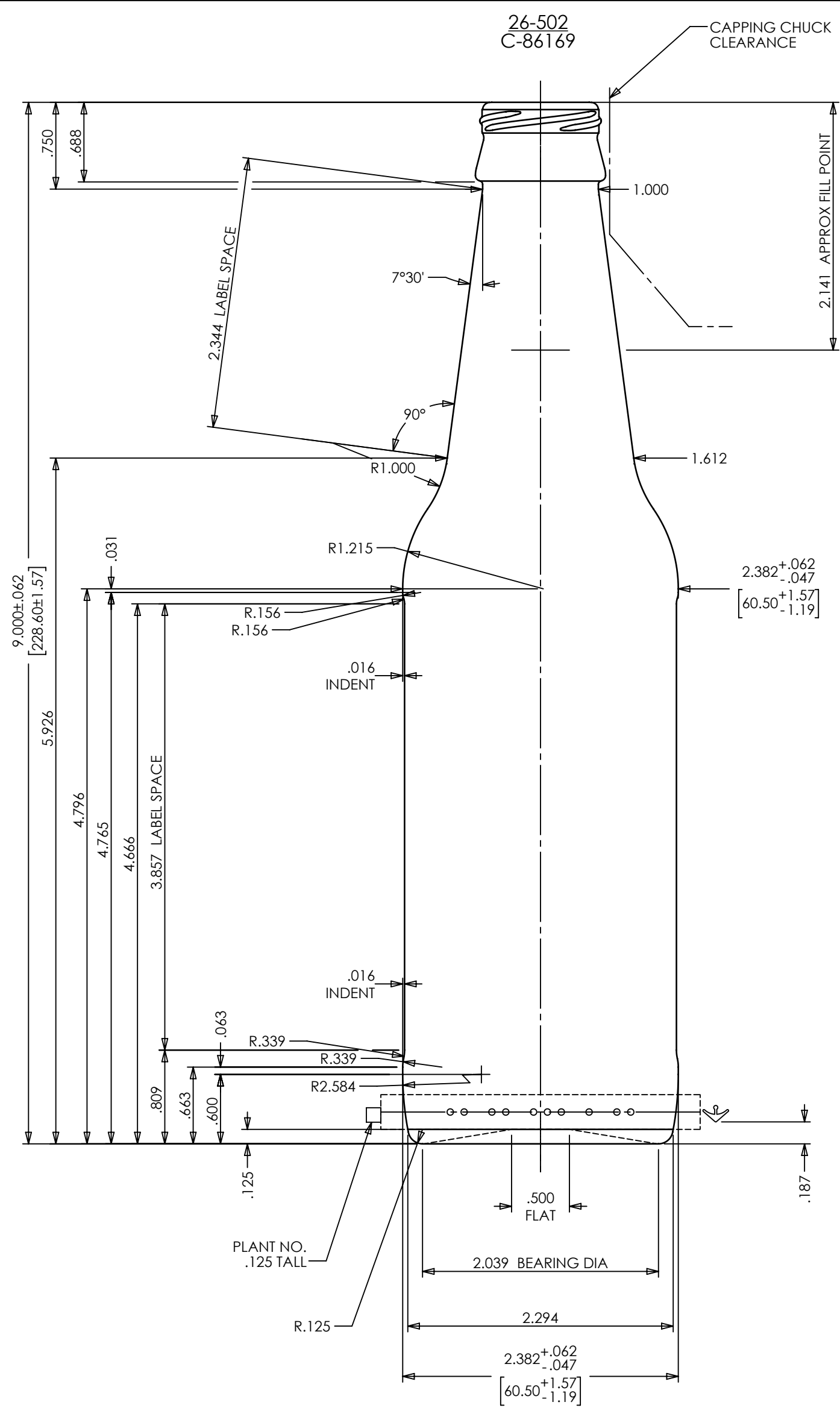


THIS DOCUMENT IS CONFIDENTIAL AND CONTAINS PROPRIETARY INFORMATION AND INTELLECTUAL PROPERTY INCLUDING, BUT NOT LIMITED TO, TRADEMARKS, COPYRIGHTS, TRADE SECRETS, AND KNOW-HOW OF ANCHOR GLASS. THIS INFORMATION MAY NOT BE USED, DISCLOSED OR REPRODUCED, IN WHOLE OR IN PART, WITHOUT THE PRIOR WRITTEN CONSENT OF ANCHOR GLASS. TITLE IN AND TO THIS DOCUMENT AND ALL INFORMATION CONTAINED HEREIN REMAINS AT ALL TIMES IN ANCHOR GLASS.



THIS BOTTLE IS DESIGNED TO PROVIDE CROWN REST CLEARANCE INDICATED ONLY. CUSTOMER MUST ADVISE IF ANY SPECIAL CLEARANCES ARE REQUIRED.

IT IS THE RESPONSIBILITY OF THE GLASS CONTAINER PURCHASER TO CONSULT WITH ITS CLOSURE AND CONTAINER SUPPLIERS TO DETERMINE THE APPROPRIATE PRESSURE LIMITS FOR THE COMBINATION OF THE CONTAINER, ITS FINISH, AND THE CLOSURE CHOSEN WHEN THE CONTAINER WILL BE SUBJECTED TO PRESSURE OR UTILIZED FOR CONTENTS UNDER PRESSURE

THIS CONTAINER IS DESIGNED FOR PRODUCTS UP TO AND INCLUDING 3 GAS VOLUMES WHERE PASTEURIZATION TEMPERATURE DOES NOT EXCEED 170° F.

THIS CONTAINER IS DESIGNED FOR PRODUCTS UP TO AND INCLUDING 4 GAS VOLUMES WHERE PASTEURIZATION TEMPERATURE DOES NOT EXCEED 163° F.

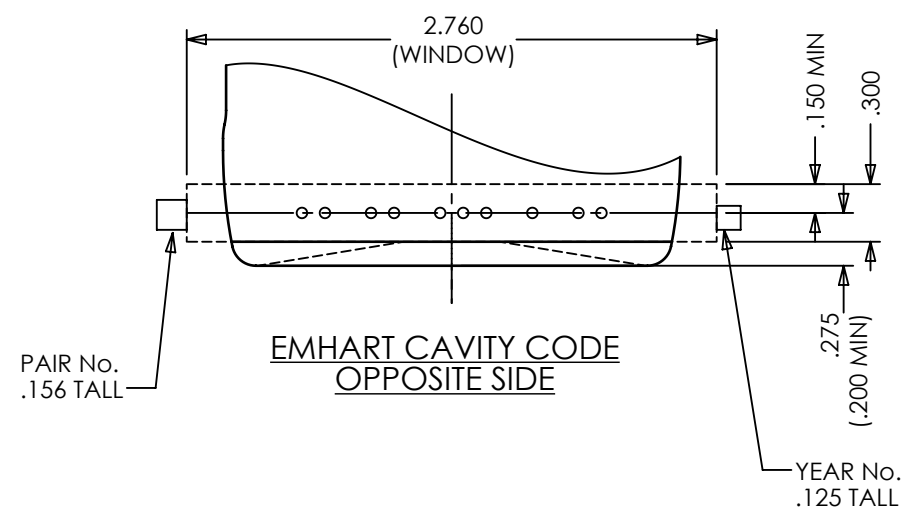
HEEL LETTERING: ROUND NOSE STYLE, RAISED .012"

KNURLING: CRESCENT KNURL TO APPEAR ON BEARING SURFACE

BOTTOM LETTERING: ROUND NOSE STYLE

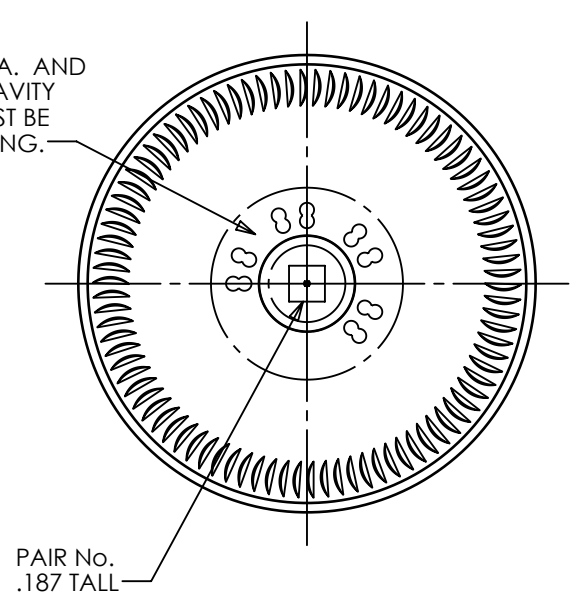
TRADEMARK: No. 00

NOTE:
IF EMHART CAVITY IDENTIFICATION DOT CODE IS USED, THEY WILL APPEAR TWICE, CENTERED ONCE IN EACH HALF AS SHOWN. USE 10 DOT CODE ONLY.



NOTES:
OVERALL HEIGHT: 9.000" (228.60mm)
LARGEST DIAMETER: 2.382" (60.50mm)
THEORETICAL TIP ANGLE > 16° 15'
HEADSPACE: 6.8%
THEORETICAL C.O.G: 3.498" UP FROM BASE OF BOTTLE

NOTE:
REGION BETWEEN 1.000 DIA. AND .400 DIA. IS FOR BINARY CAVITY NO. CODE ONLY AND MUST BE FREE OF ALL OTHER LETTERING.



DESIGN/ENGINEERING		TAMPA, FLORIDA	
SIZES & SPECIFICATIONS SHOWN ARE IDEAL ACTUAL SAMPLES WILL DETERMINE SIZES			
SCALE: 1:1	SHAPE CODE: 10	DESCRIPTION: GENERAL SALE 12 FL OZ N/R BEER	
OVERFLOW: 12.820± .187 FL OZ 379.13± 5.53 MLS		ITEM No.: 812V9	
NOMINAL CAPACITY: 12.000± .187 FL OZ 354.88± 5.53 MLS		DATE: 10/19/15	
WEIGHT: 7.000± .313 OZS 198.45± 8.87 GRAMS		DRN BY: S. Thomas	
PART No.: -		MAX PRESSURE: 4.0 GAS VOL	
PROJECT No.: 21056		STATUS: APPROVED	
REFERENCES: 812K5C		DWG No.: B-97165	

REV	DESCRIPTION	DATE	APPROVED
5	REVISED PRESSURE NOTE TO INCLUDE 4 GAS VOL @ 163° F	3/12/19	S.THOMAS
4	DIAMETER WAS 2.394 & OVERFLOW WAS 12.881	9/30/16	S.THOMAS
3	LABEL INDENT WAS .025, LOWERED SHOULDER FOR CAPACITY & INCREASED RADII IN LOWER LABEL INDENT TRANSITION	8/9/16	S.THOMAS
2	ADDED ITEM NUMBER	7/15/16	S.THOMAS
1	DIAMETER WAS 2.359, INDENT WAS .022 & ADJ INDENT RADII	4/6/16	S.THOMAS