

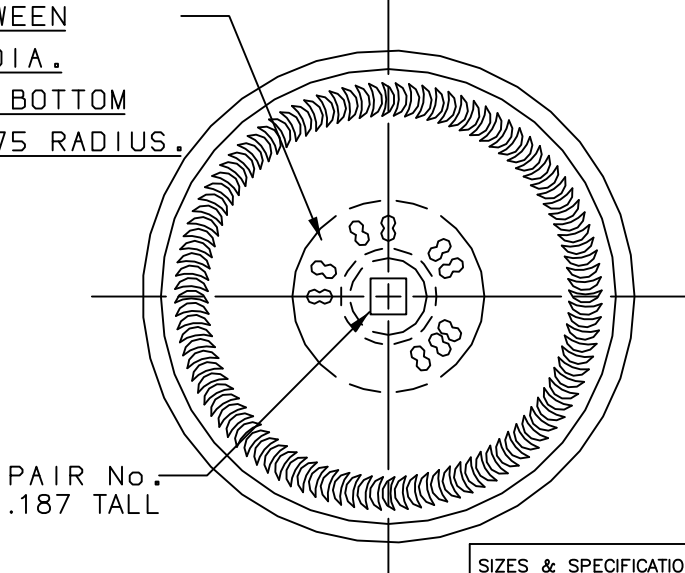
THIS BOTTLE IS DESIGNED TO PROVIDE CROWN REST CLEARANCE INDICATED ONLY. CUSTOMER MUST ADVISE IF ANY SPECIAL CLEARANCES ARE REQUIRED.

IT IS THE RESPONSIBILITY OF THE GLASS CONTAINER PURCHASER TO CONSULT WITH ITS CLOSURE AND CONTAINER SUPPLIERS TO DETERMINE THE APPROPRIATE PRESSURE LIMITS FOR THE COMBINATION OF THE CONTAINER, ITS FINISH, AND THE CLOSURE CHOSEN, WHEN THE CONTAINER WILL BE SUBJECTED TO PRESSURE OR UTILIZED FOR CONTENTS UNDER PRESSURE.

THIS CONTAINER IS DESIGNED FOR PRODUCTS UP TO AND INCLUDING 3 GAS VOLUMES WHERE PASTEURIZATION TEMPERATURE DOES NOT EXCEED 145° F.

NOTE :
 AREA TO BE CLEAR BETWEEN 1.000" DIA. & .400" DIA. FOR CID CODE. CENTER BOTTOM TO HAVE A MINIMUM .375 RADIUS.

NOTE :
 IF EMHART CAVITY IDENTIFICATION DOT CODE IS USED, THEY WILL APPEAR TWICE, CENTERED ONCE IN EACH HALF AS SHOWN. DOT'S NOT TO BE IN CONTACT



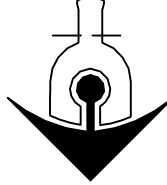
BLOW MOULD TO 812G7

NOTE !
 OVERALL HEIGHT -----7.672" (194.87mm)
 LARGEST DIAMETER -----2.553" (64.85mm)
 NOTE: THEORETICAL TIP ANGLE > 20° 16'. HEADSPACE = 5.6%
 THEORETICAL C.O.G. = 2.777" UP FROM BTM OF BTL.

HEEL LETTERING: ROUND NOSED, RAISED .012.
KNURLING: CRESCENT KNURL ON BEARING SURFACE.
BOTTOM LETTERING: ROUND NOSED.
TRADEMARK: NO.00.

3. ADDED THE 26-6511C FINISH	8/18/09 SODE
2. UPDATED TO GENERAL SALE	1/17/08 SODE
1. O'FLOW WAS 12.810 FL OZ, REMOVED "TENTATIVE NOTE" AND 1. ADDED ITEM NO., FILL PT WAS 1.856 DOWN, REDUCED DIAS .010 2/27/01 SODE	
REVISIONS	

SIZES & SPECIFICATIONS SHOWN ARE IDEAL -ACTUAL SAMPLES WILL DETERMINE SIZES.	
SCALE: FULL SIZE	SHAPE CODE: 10
OVERFLOW: APPROX.	12.672 ± .187 FL OZ 378.79 ± 5.53 ML
FILL POINT OR NOMINAL CAPACITY:	12.000 ± .187 FL OZ 354.84 ± 5.53 ML
WEIGHT:	6.156 OZ 174.5 G
PROJECT No.	19014 NNPB
REF:	812G7



**ANCHOR GLASS
CONTAINER**

DESIGN/ENGINEERING TAMPA, FLORIDA

GENERAL SALE

12 oz. N/R BEER BOTTLE

ITEM No. **812S2**

DATE 11/09/00 DRN. BY *J. Lee*

DWG. No.: **C-93296**