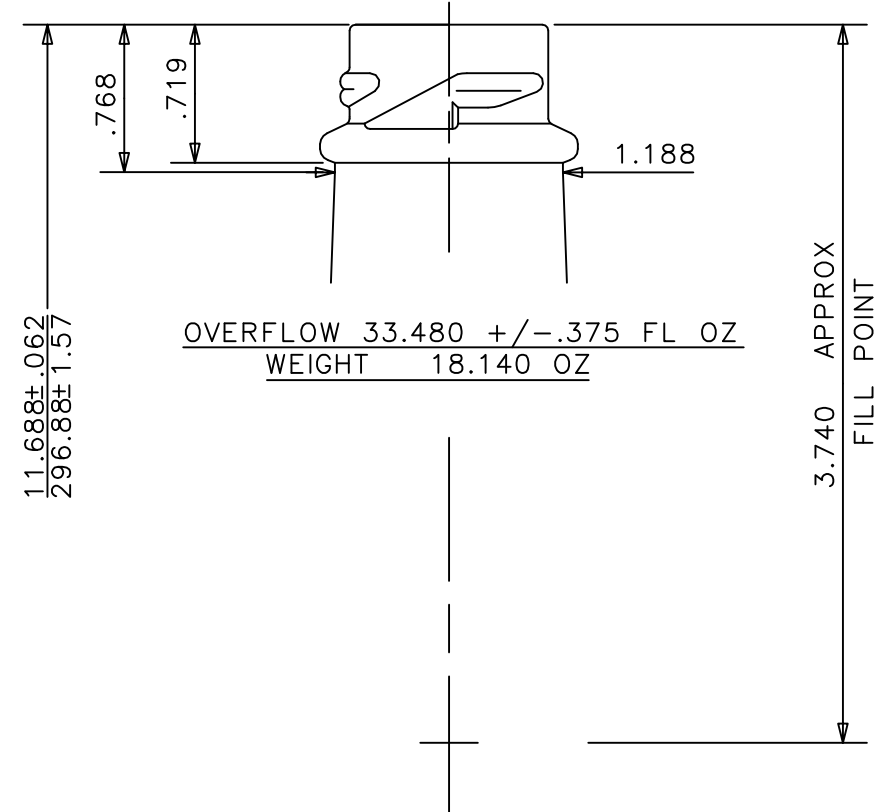
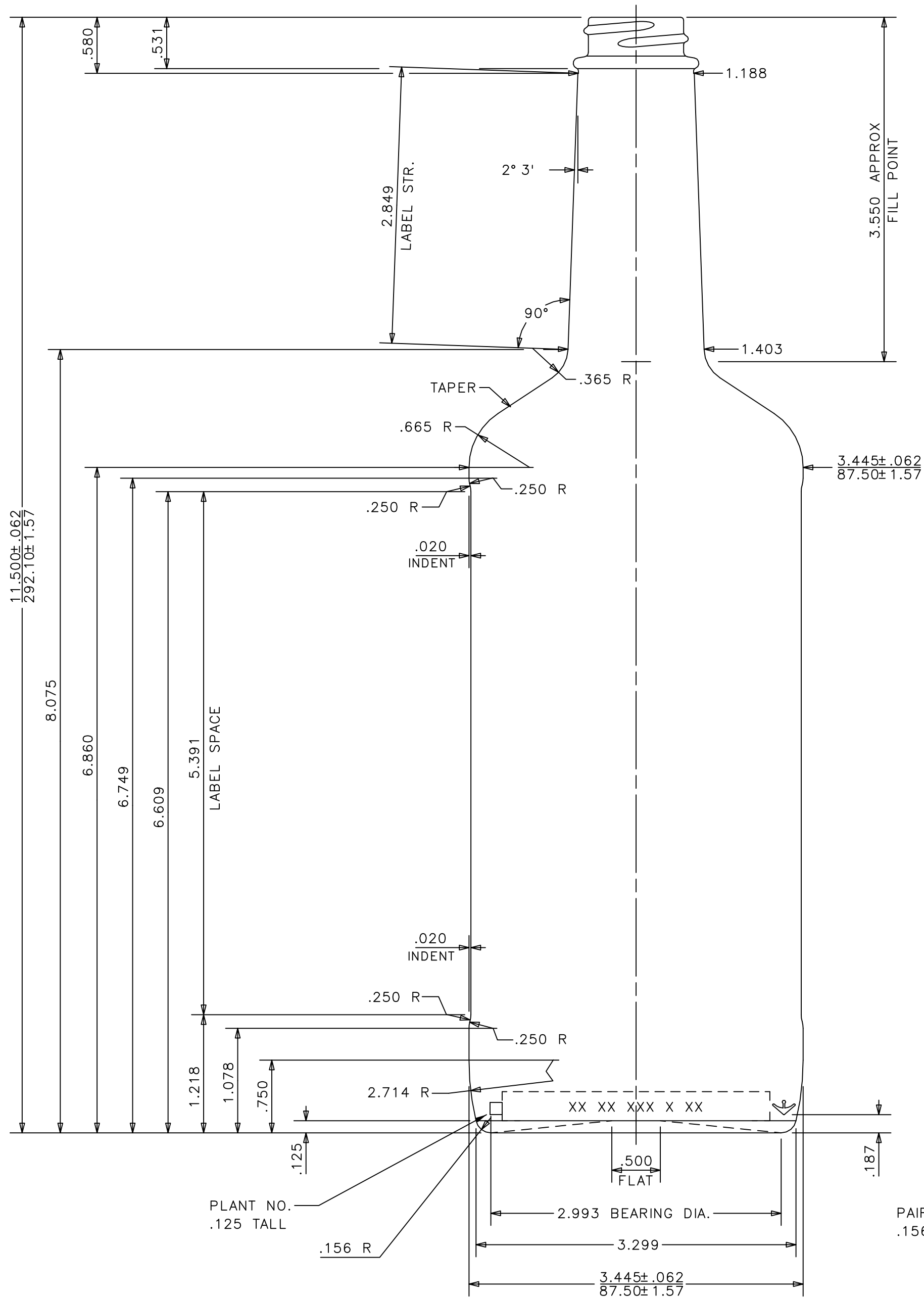


28MM-405X

30MM-2080

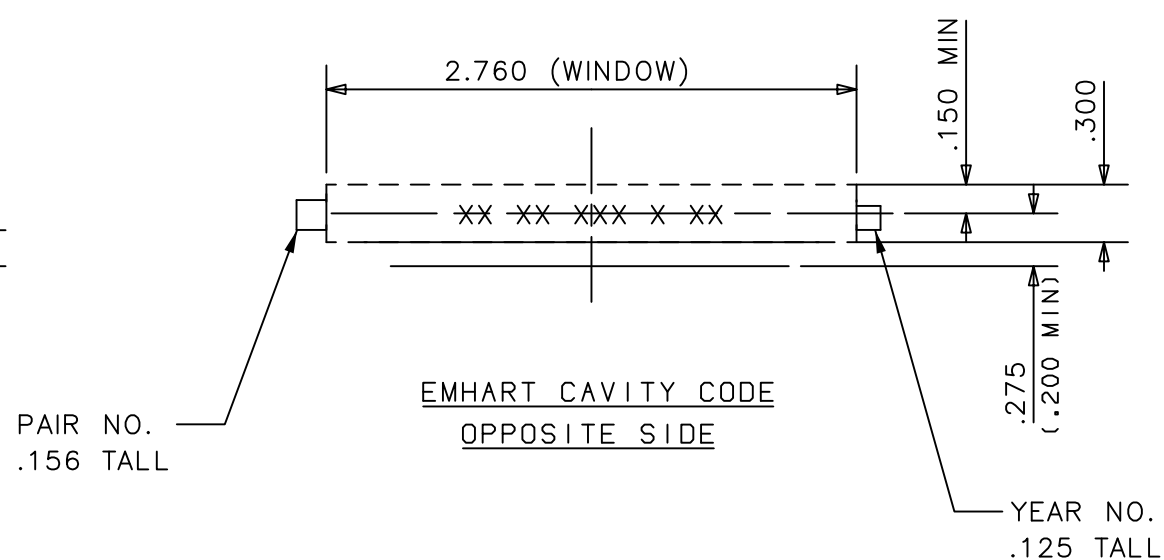


OVERFLOW 33.480 +/- .375 FL OZ
WEIGHT 18.140 OZ

THIS DOCUMENT IS CONFIDENTIAL AND CONTAINS PROPRIETARY INFORMATION AND INTELLECTUAL PROPERTY INCLUDING, BUT NOT LIMITED TO, TRADEMARKS, COPYRIGHTS, TRADE SECRETS, AND KNOW-HOW OF ANCHOR GLASS. THIS INFORMATION MAY NOT BE USED, DISCLOSED OR REPRODUCED, IN WHOLE OR IN PART, WITHOUT THE PRIOR WRITTEN CONSENT OF ANCHOR GLASS. TITLE IN AND TO THIS DOCUMENT AND ALL INFORMATION CONTAINED HEREIN REMAINS AT ALL TIMES IN ANCHOR GLASS.

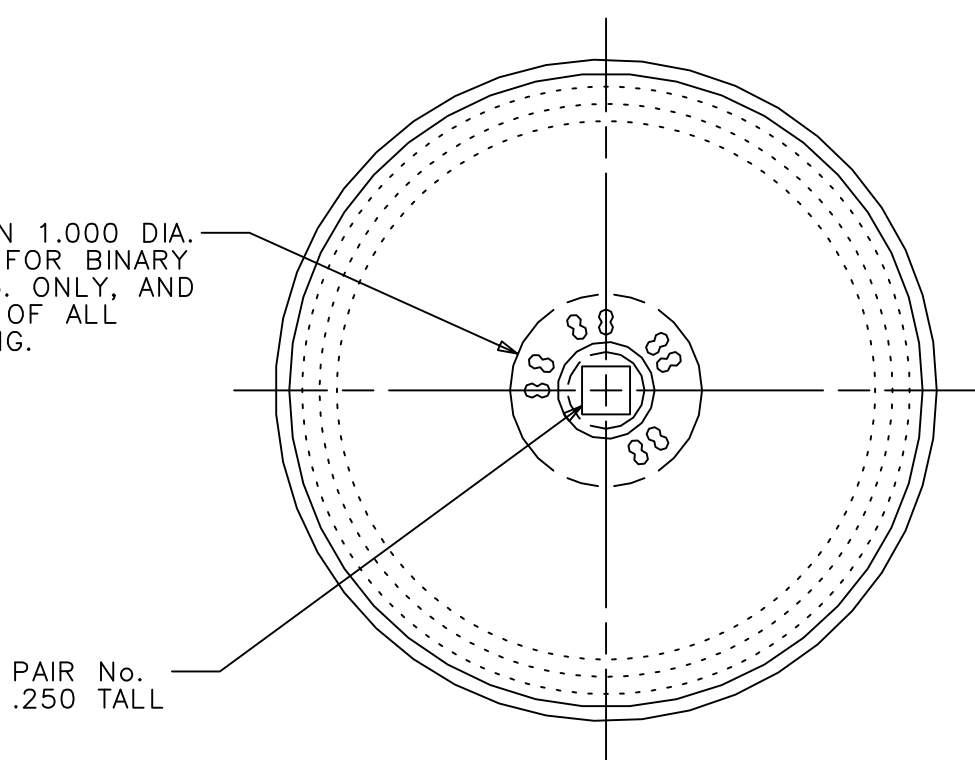
NOTE :

IF EMHART CAVITY IDENTIFICATION DOT CODE IS USED, THEY WILL APPEAR TWICE, CENTERED ONCE IN EACH HALF AS SHOWN.



NOTE:

REGION BETWEEN 1.000 DIA. & .400 DIA. IS FOR BINARY CAVITY CODE No. ONLY, AND MUST BE FREE OF ALL OTHER LETTERING.




NOTE !

OVERALL HEIGHT ----- 11.688"(296.88mm)
LARGEST DIAMETER ----- 3.445"(87.50mm)

NOTE: THEORETICAL TIP ANGLE > 18° 55'. HEADSPACE = 4.4%
THEORETICAL C.O.G. = 4.366 UP FROM BTM OF BTL.

HEEL LETTERING: ROUND NOSED, RAISED .015 IN GLASS.
KNURLING: BPK-190 ON BEARING SURFACE
BOTTOM LETTERING: ROUND NOSED.
TRADEMARK: No. 00.

3. ADDED 30-2080 FINISH	1/3/18 SODE
2. ADJUSTED FILL POINT BASED ON SAMPLE RESULTS	11/6/14 SODE
1. SHOULDER RADIUS WAS .625	8/26/14 SODE
REVISIONS	

SIZES & SPECIFICATIONS SHOWN ARE IDEAL -ACTUAL SAMPLES WILL DETERMINE SIZES.		 <p>ANCHOR GLASS CONTAINER</p> <p>DESIGN/ENGINEERING TAMPA, FLORIDA</p>	
SCALE: FULL	SHAPE CODE: 10		
OVERFLOW: 33.400 ± .375 FL OZS 987.70 ± 11.09 MLS		GENERAL SALE 32 FL. OZ. MIXER	
FILL POINT OR NOMINAL CAPACITY: 32.000 ± .375 FL OZS 946.30 ± 11.09 MLS		ITEM No. 13227	
WEIGHT: 18.000 OZS. 510.35 GRAMS		DATE 8-25-2014	DRN. BY D. TAYLOR
PROJECT No. 20920 BB		DWG. No.: B-96894	
REF 13501			