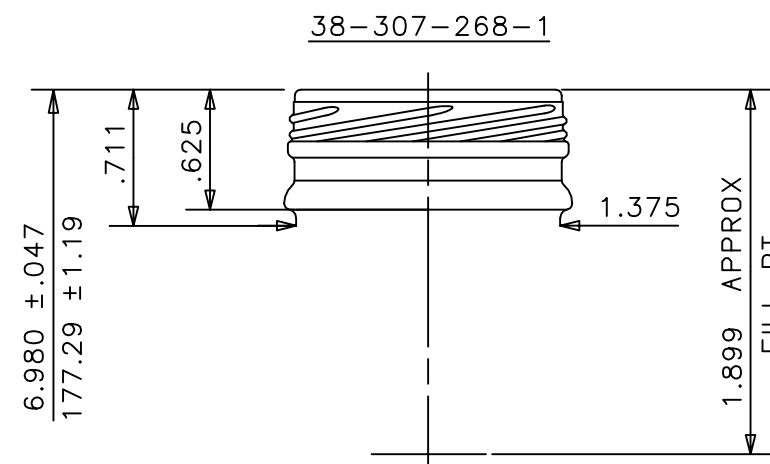
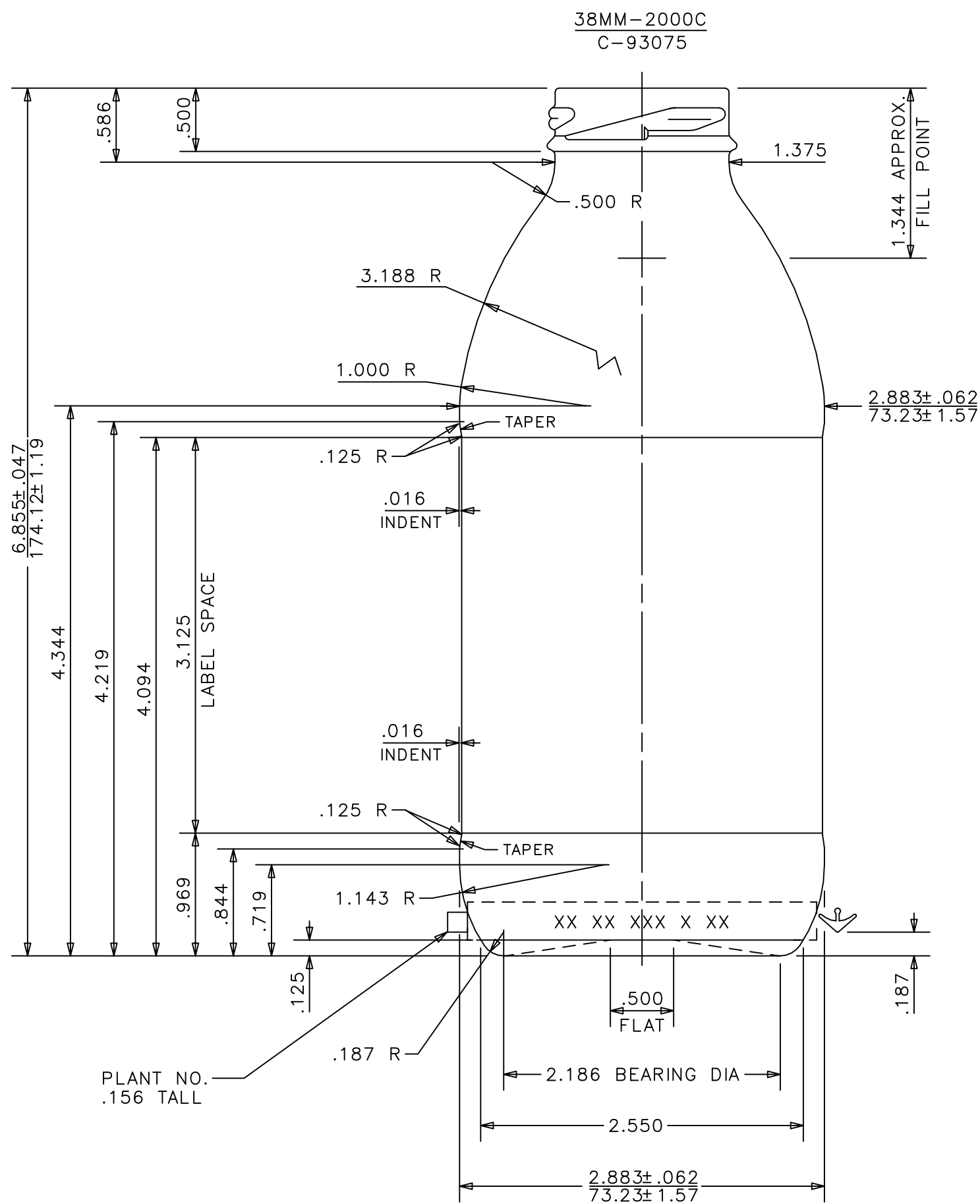
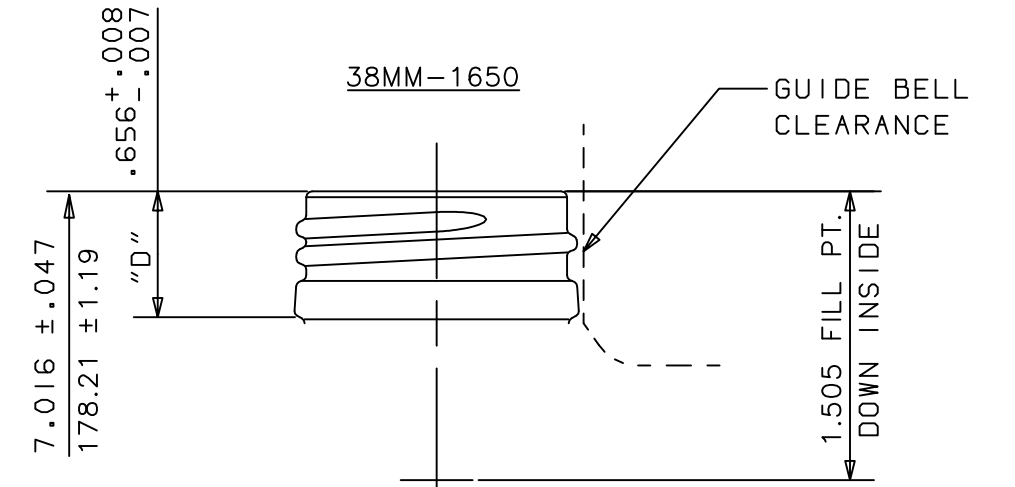


THIS DOCUMENT IS CONFIDENTIAL AND CONTAINS PROPRIETARY INFORMATION AND INTELLECTUAL PROPERTY INCLUDING, BUT NOT LIMITED TO, TRADEMARKS, COPYRIGHTS, TRADE SECRETS, AND KNOW-HOW OF ANCHOR GLASS. THIS INFORMATION MAY NOT BE USED, DISCLOSED OR REPRODUCED, IN WHOLE OR IN PART WITHOUT THE PRIOR WRITTEN CONSENT OF ANCHOR GLASS. TITLE IN AND TO THIS DOCUMENT AND ALL INFORMATION CONTAINED HEREIN REMAINS AT ALL TIMES IN ANCHOR GLASS.



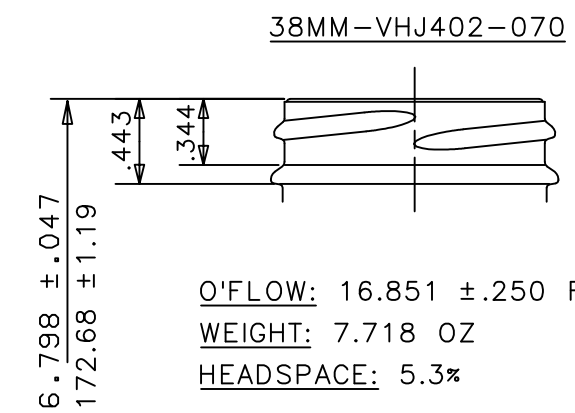
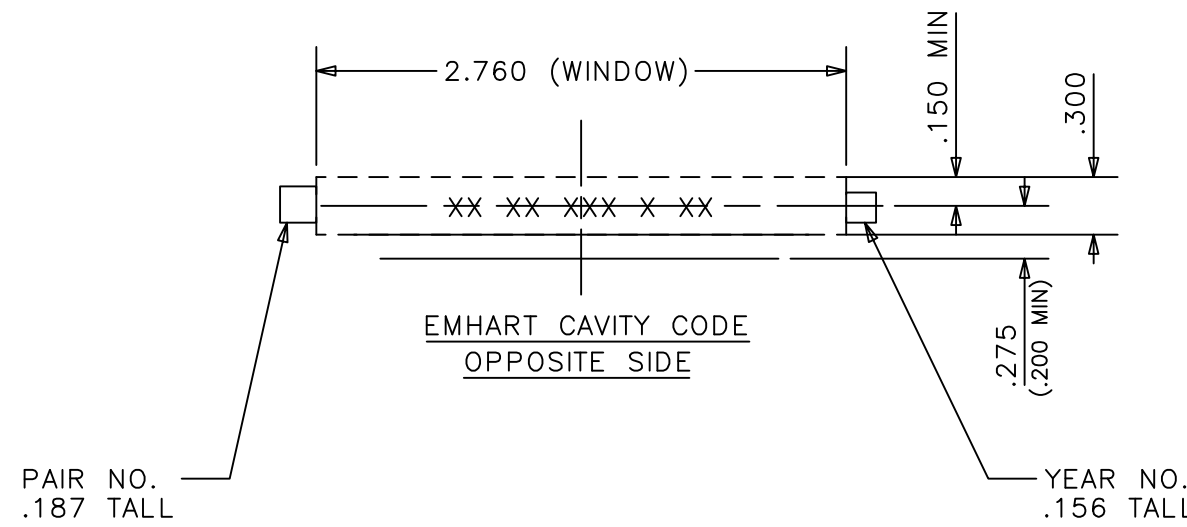
FILL POINT: 15.000 ± .250 FL OZ  
 O'FLOW: 16.974 ± .250 FL OZ  
 WEIGHT: 7.914 OZ  
 HEADSPACE: 13.1 %



O'FLOW: 16.984 ± .250 FL OZ  
 WEIGHT: 8.156 OZ  
 HEADSPACE: 6.2%

**NOTE:**

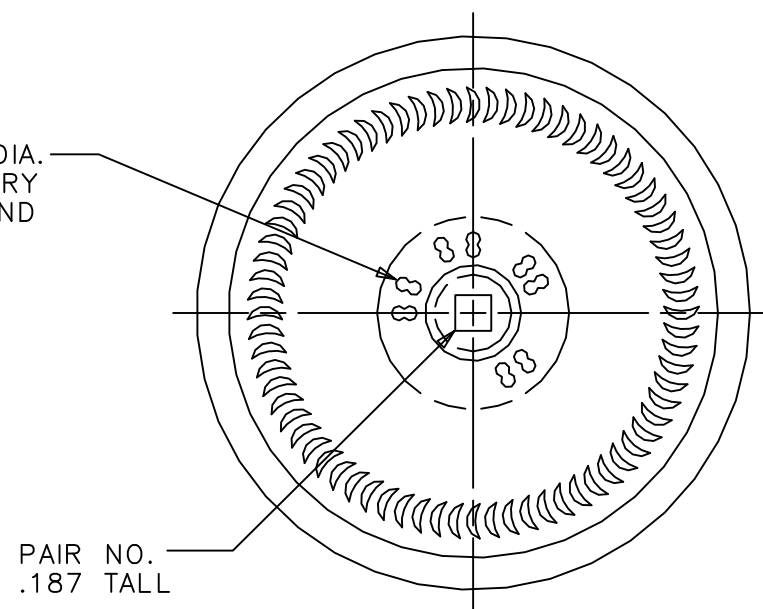
IF EMHART CAVITY IDENTIFICATION DOT CODE IS USED, THEY WILL APPEAR TWICE, CENTERED ONCE IN EACH HALF AS SHOWN. USE (10) DOT CODING ONLY



O'FLOW: 16.851 ± .250 FL OZ  
 WEIGHT: 7.718 OZ  
 HEADSPACE: 5.3%

**KNURLING:** CRESCENT KNURL TO APPEAR ON BEARING SURFACE.  
**HEEL LETTERING:** ROUND NOSED RAISED .012".  
**BOTTOM LETTERING:** ROUND NOSED.  
**TRADEMARK:** No. 0

**NOTE:**  
 REGION BETWEEN 1.000 DIA. & .400 DIA. IS FOR BINARY CAVITY CODE NO. ONLY AND MUST BE FREE OF ALL OTHER LETTERING.



BLOW MOULD TO 11738A, 11787 & 11790

**NOTE!**

OVERALL HEIGHT ----- 7.016"(178.21mm)  
 LARGEST DIAMETER ----- 2.883"(73.23mm)  
 NOTE: THEORETICAL TIP ANGLE > 20° 40'. HEADSPACE = 5.6%  
 THEORETICAL C.O.G. = 2.897" UP FROM BTM OF BTL.

16. UPDATED TO ANCHOR GLASS STANDARDS	3/12/15 DT
15. WEIGHT WAS 7.750 OZ, WAS "C" SIZE DRAWING	3/20/07 SODE
14. REV FINISH DESIGNATION FROM 38-2225A	5/25/06 SODE
13. 38-2225A FINISH DESIGNATION WAS 38-307-268-1 REV PER G.P.I.	1-21-03 DT
12. PT FINISH WAS .500 TALL, O'FLOW WAS 16.900 FL OZ O.A.H. WAS 6.855, HEADSPACE WAS 12.7%	7/3/02 SODE

11. REVISED THE 38-307-313 TO BE THE 38-307-268	JLEE 05/09/02
10. ADDED THE 38-307-313 FINISH • 15.000 FL OZ FILL PT. UPDATED FORMAT	JLEE 04/29/02
9. REMOVED 38-402-057, 38-1768 & 38-402-038	3/5/97 SODE
8. ADDED 38-1650 FINISH.	4-5-95 DP
7. ADDED 38-402-057 FINISH.	3-30-95 DP
6. ADDED 38-VHJ402-070 FIN. REV NECK DIA., WAS 1.344	2-17-95 DP
5. DELETED 38-1650 FINISH.	8-30-94 DP
4. ADDED O'FLOW & WGT FOR 38MM-402-038 FIN.	8-3-94 DP
3. ADDED .125 FLATS IN SHLDR & HEEL. REVISED LABEL INDENT, WAS .024.	5-19-94 DP
2. ADDED FINISH 38-402-038	4-18-94 S.
1. ADD FINISH 38-1650	12-3-93 R.J.O.

SIZES & SPECIFICATIONS SHOWN ARE IDEAL -ACTUAL SAMPLES WILL DETERMINE SIZES.	
SCALE: FULL	SHAPE CODE: 10
OVERFLOW:	
16.900 ± .250 FL OZS	
499.73 ± 7.39 MLS	
FILL POINT OR NOMINAL CAPACITY:	
16.000 ± .250 FL OZS	
473.12 ± 7.39 MLS	
WEIGHT: 8.000 OZS	
226.8 GRAMS	
PROJECT No.	
14551/19295	PB

**ANCHOR GLASS CONTAINER**

DESIGN/ENGINEERING TAMPA, FLORIDA

GENERAL SALE

16 FL OZ TEA/JUICE BEVERAGE

ITEM No. 11738

DATE 9-18-92 DRN. BY D. J. FROMM

DWG. No.: B-88386

REVISIONS