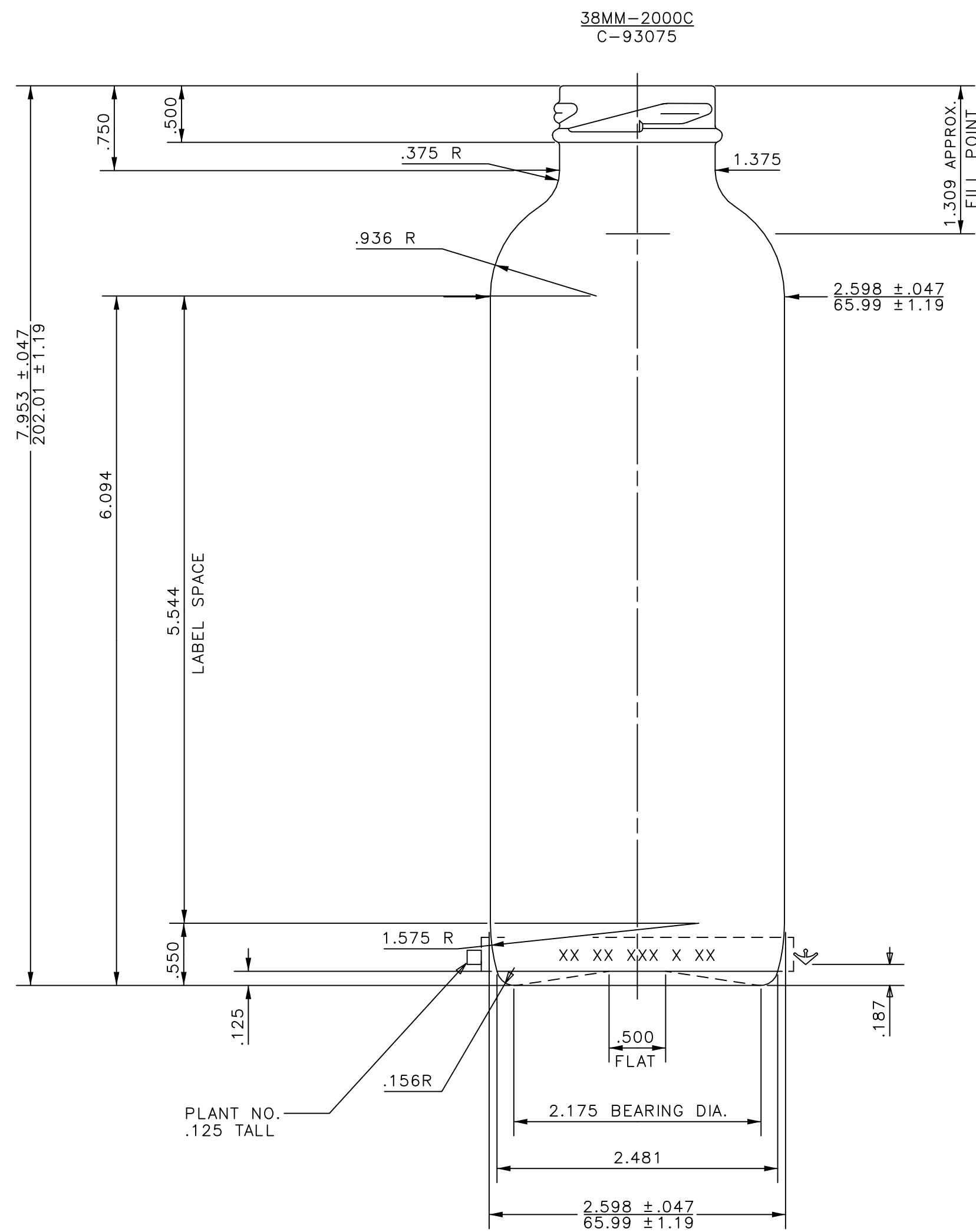
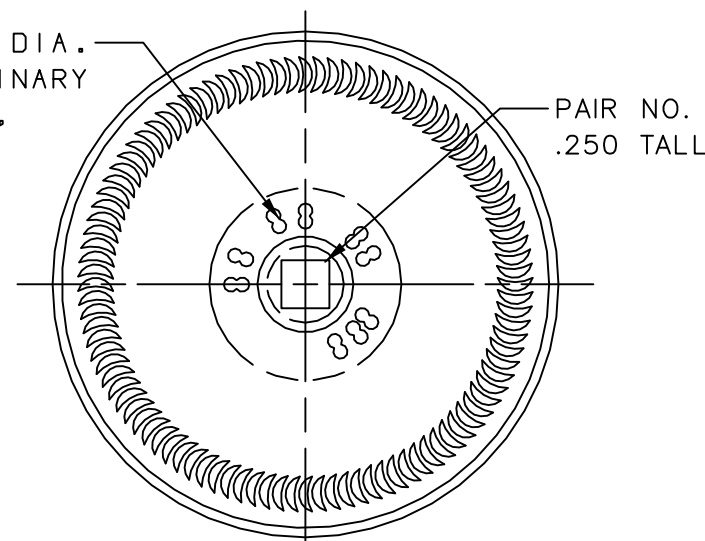


THIS DOCUMENT IS CONFIDENTIAL AND CONTAINS PROPRIETARY INFORMATION AND INTELLECTUAL PROPERTY INCLUDING, BUT NOT LIMITED TO, TRADEMARKS, COPYRIGHTS, TRADE SECRETS, AND KNOW-HOW OF ANCHOR GLASS. THIS INFORMATION MAY NOT BE USED, DISCLOSED OR REPRODUCED, IN WHOLE OR IN PART, WITHOUT THE PRIOR WRITTEN CONSENT OF ANCHOR GLASS. TITLE IN AND TO THIS DOCUMENT AND ALL INFORMATION CONTAINED HEREIN REMAINS AT ALL TIMES IN ANCHOR GLASS.

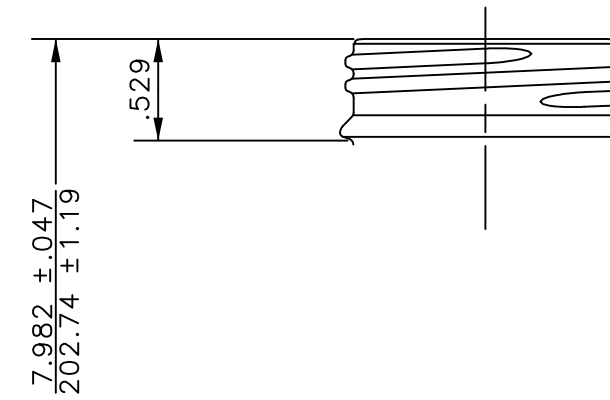


NOTE :

REGION BETWEEN 1.000 DIA. & .400 DIA. IS FOR BINARY CAVITY CODE No. ONLY, AND MUST BE FREE OF ALL OTHER LETTERING.



38MM-1768 TE
C-88110

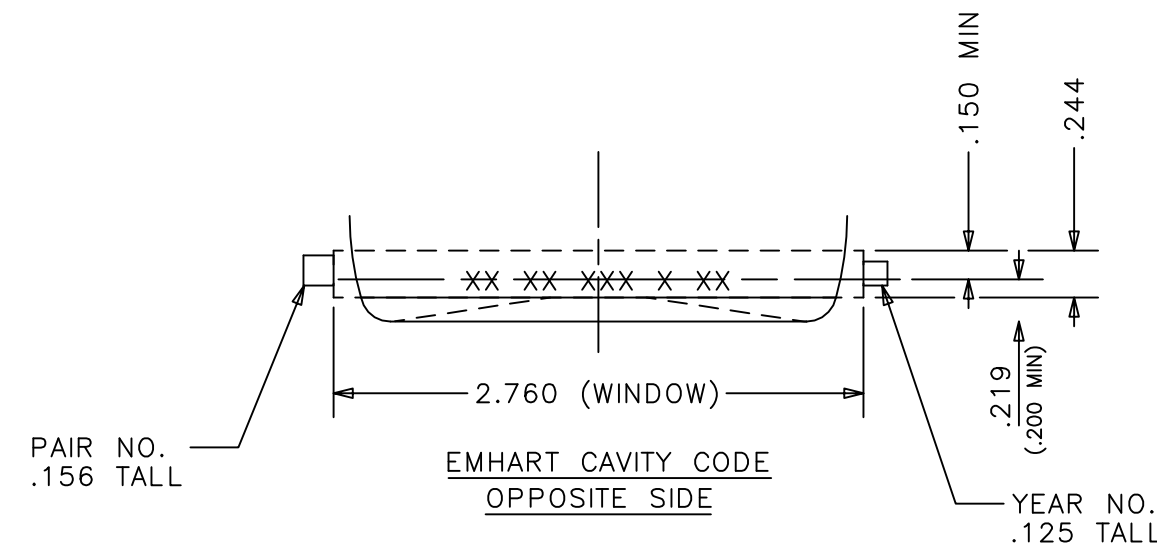


NOTE FOR 38-1768 FINISH ONLY

THIS BOTTLE IS DESIGNED TO PROVIDE CROWN REST CLEARANCE INDICATED ONLY. CUSTOMER MUST ADVISE IF ANY SPECIAL CLEARANCES ARE REQUIRED.

IT IS THE RESPONSIBILITY OF THE GLASS CONTAINER PURCHASER TO CONSULT WITH ITS CLOSURE AND CONTAINER SUPPLIERS TO DETERMINE THE APPROPRIATE PRESSURE LIMITS FOR THE COMBINATION OF THE CONTAINER, ITS FINISH, AND THE CLOSURE CHOSEN, WHEN THE CONTAINER WILL BE SUBJECTED TO PRESSURE OR UTILIZED FOR CONTENTS UNDER PRESSURE.

THIS CONTAINER IS DESIGNED FOR PRODUCTS UP TO AND INCLUDING 4 GAS VOLUMES WITH NO PASTEURIZATION.



NOTE:


IF EMHART CAVITY IDENTIFICATION DOT CODE IS USED, THEY WILL APPEAR TWICE, CENTERED ONCE IN EACH HALF AS SHOWN.

BOTTOM LETTERING: ROUND NOSED.
KNURLING: CRESCENT ON BEARING SURFACE.
TRADEMARK: NO. 00
HEEL LETTERING: ROUND NOSED STYLE, RAISED .012

NOTE!

OVERALL HEIGHT ----- 7.982"(202.74mm)
LARGEST DIAMETER ----- 2.598"(65.99mm)

NOTE: THEORETICAL TIP ANGLE > 17° 28'. HEADSPACE = 6.3%
THEORETICAL C.O.G. = 3.436 UP FROM BTM OF BTL.

SIZES & SPECIFICATIONS SHOWN ARE IDEAL -ACTUAL SAMPLES WILL DETERMINE SIZES.		 ANCHOR GLASS CONTAINER DESIGN/ENGINEERING TAMPA, FLORIDA
SCALE: FULL	SHAPE CODE: 10	
OVERFLOW: 17.000 ±.250 FL OZ 502.74 ±7.39 ML		GENERAL SALE 16 FL.OZ. N/R BOTTLE ITEM No. <u>11761</u>
FILL POINT OR NOMINAL CAPACITY: 16.000 ±.250 FL OZ 473.16 ±7.39 ML		
WEIGHT: 9.125 ±.125 OZ 258.7 ±3.54 G		DATE 12-11-95 DRN. BY <i>J.Sode</i>
PROJECT No. 19588/17083 P/B		DWG. No.: <u>B-90864</u>

6. ADDED PRESSURE NOTE FOR 38-1768 FINISH	3/1/18 SODE
5. REMOVED LABEL INDENT AND ADDED 38-1768 FINISH PER SALES	2/26/18 SODE
4. UPDATED FORMAT	8/8/01 SODE
3. REMOVED TENTATIVE NOTE	2/6/96 SODE
2. REMOVED SPOT BAR	1/3/96 SODE
1. ADDED ITEM NO.	1/2/95 SODE
REVISIONS	