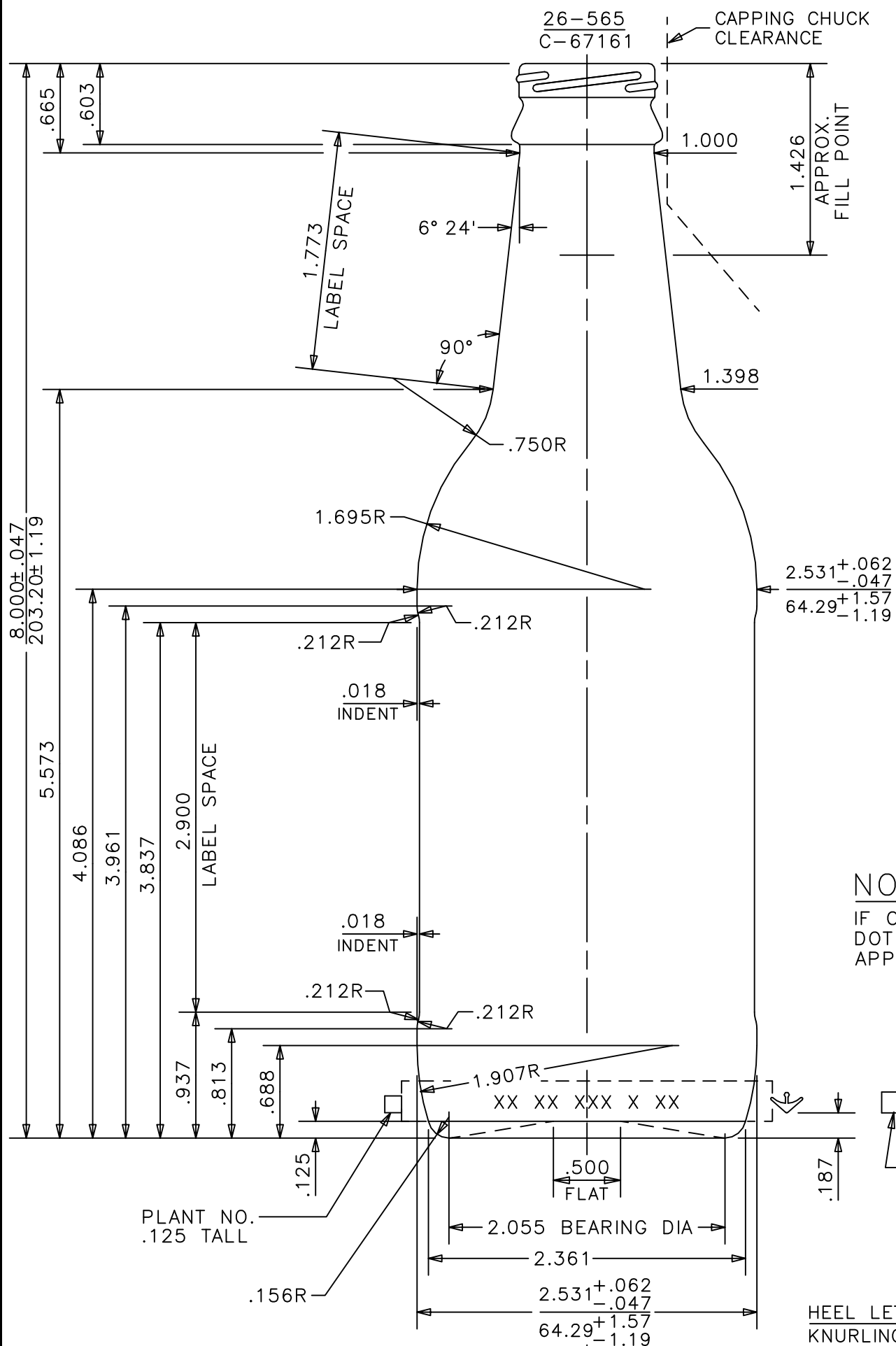
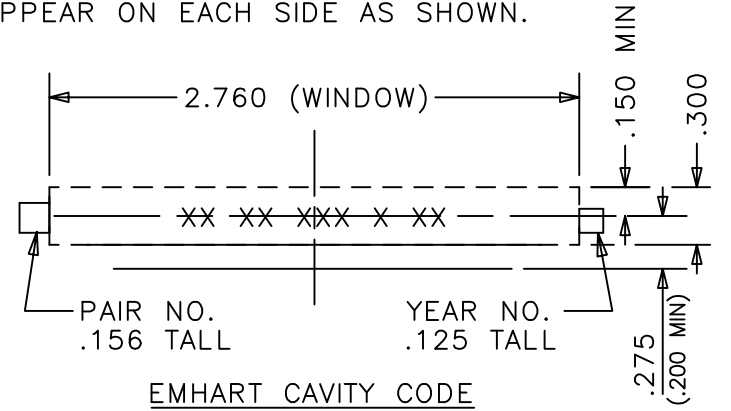


THIS DOCUMENT IS CONFIDENTIAL AND CONTAINS PROPRIETARY INFORMATION AND INTELLECTUAL PROPERTY INCLUDING, BUT NOT LIMITED TO, TRADEMARKS, COPYRIGHTS, TRADE SECRETS, AND KNOW-HOW OF ANCHOR GLASS. THIS INFORMATION MAY NOT BE USED, DISCLOSED OR REPRODUCED, IN WHOLE OR IN PART WITHOUT THE PRIOR WRITTEN CONSENT OF ANCHOR GLASS. TITLE IN AND TO THIS DOCUMENT AND ALL INFORMATION CONTAINED HEREIN REMAINS AT ALL TIMES IN ANCHOR GLASS.



NOTE:

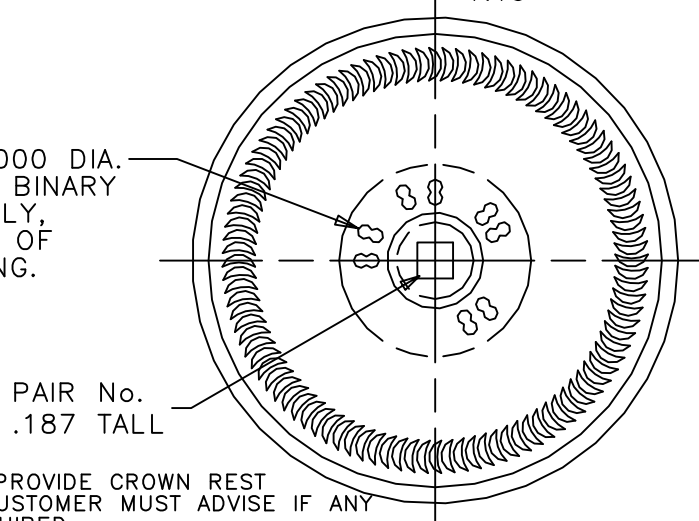
IF CAVITY IDENTIFICATION DOT CODE IS USED, IT WILL APPEAR ON EACH SIDE AS SHOWN.



HEEL LETTERING: ROUND NOSED, RAISED .012" MAX.
 KNURLING: CRESCENT ON BEARING SURFACE.
 BOTTOM LETTERING: ROUND NOSED.
 TRADEMARK: No.00.

NOTE:

REGION BETWEEN 1.000 DIA. & .400 DIA. IS FOR BINARY CAVITY CODE No. ONLY, AND MUST BE FREE OF ALL OTHER LETTERING.



BLOW MOULD TO 61234,
61235, 61236, 61238,
61241 & 61242

NOTE!

OVERALL HEIGHT ----- 8.000"(203.20mm)
 LARGEST DIAMETER ----- 2.531"(64.29mm)

NOTE: THEORETICAL TIP ANGLE > 19° 11'. HEADSPACE = 3.7%
 THEORETICAL C.O.G. = 2.953 UP FROM BTM OF BTL.

SIZES & SPECIFICATIONS SHOWN ARE IDEAL -ACTUAL SAMPLES WILL DETERMINE SIZES.

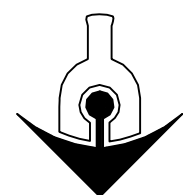
SCALE: FULL SHAPE CODE: 10

OVERFLOW:
 12.440 ±.218 FL OZS
 367.88 ±6.45 MLS

FILL POINT OR NOMINAL CAPACITY:
 12.000 ±.218 FL OZS
 354.88 ±6.45 MLS

WEIGHT: 7.000 OZ
 198.45 GRAMS

PROJECT No. 19916 NNPB
 REF. DWG. NO. C-94590R2



ANCHOR GLASS
 CONTAINER

DESIGN/ENGINEERING

TAMPA, FLORIDA

GENERAL SALE

12 FL.OZ. N/R BEVERAGE

ITEM No. 61237A

DATE 10-18-2006

DRN. BY D.TAYLOR

DWG. No.: C-95220

8. INCREASED PRESSURE NOTE FROM 2.6 GV TO 3.3 GV	9/13/17 SODE
7. ADDED 2.6 GV PRESSURE NOTE	7/19/17 SODE
6. REMOVED SPOTTING LUG PER CUSTOMER - CHANGED ITEM NUMBER WAS 61237	10/25/16 DT
5. MADE ITEM GENERAL SALE	7/24/09 SODE
4. NAME CHANGE IN TITLE BLOCK	8-13-08 DT
3. REMOVED "TENTATIVE DESIGN" NOTE, O'FLOW WAS 12.480 FL OZ, HEADSPACE WAS 4.0%	1/22/07 SODE
2. ADDED BLOW MOULD NOTE AND ITEM NUMBER, CORRECTED FINISH HGT	11/2/06 SODE
1. DIAMETER WAS 2.543 - RAISED SHOULDER FOR CAPACITY - RELOCATED SPOTTING FEATURE 33° 47' OFF CENTERLINE.	10-24-06 DT

REVISIONS