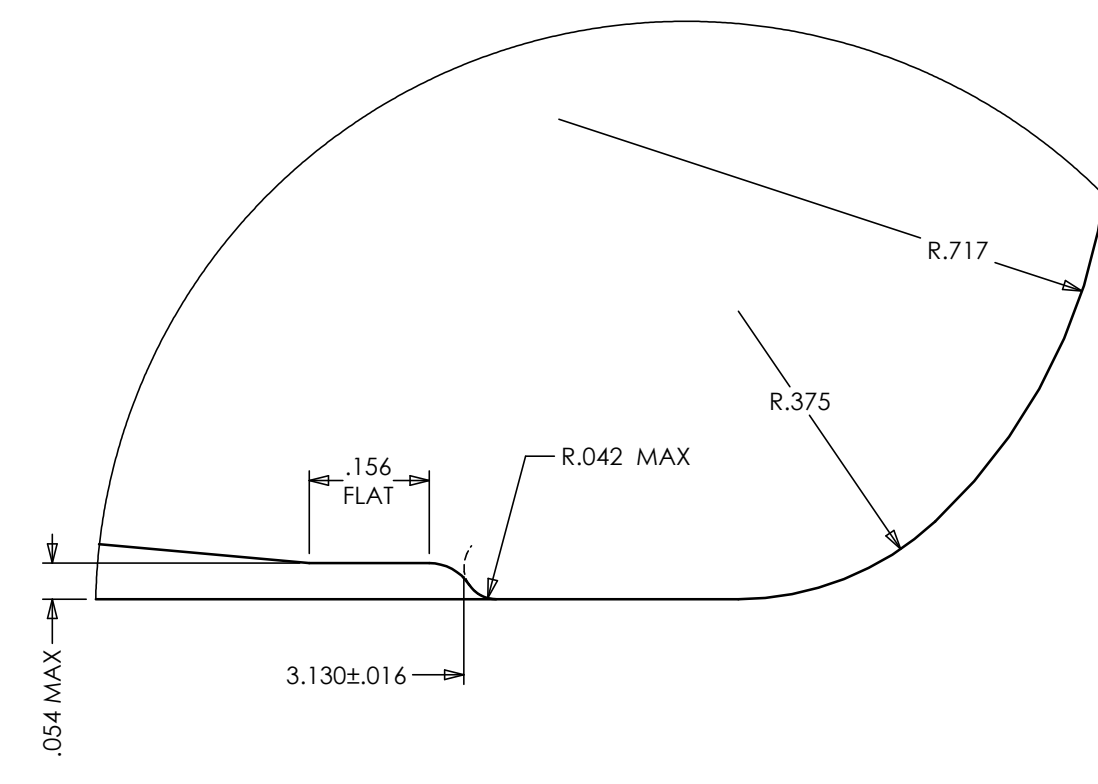
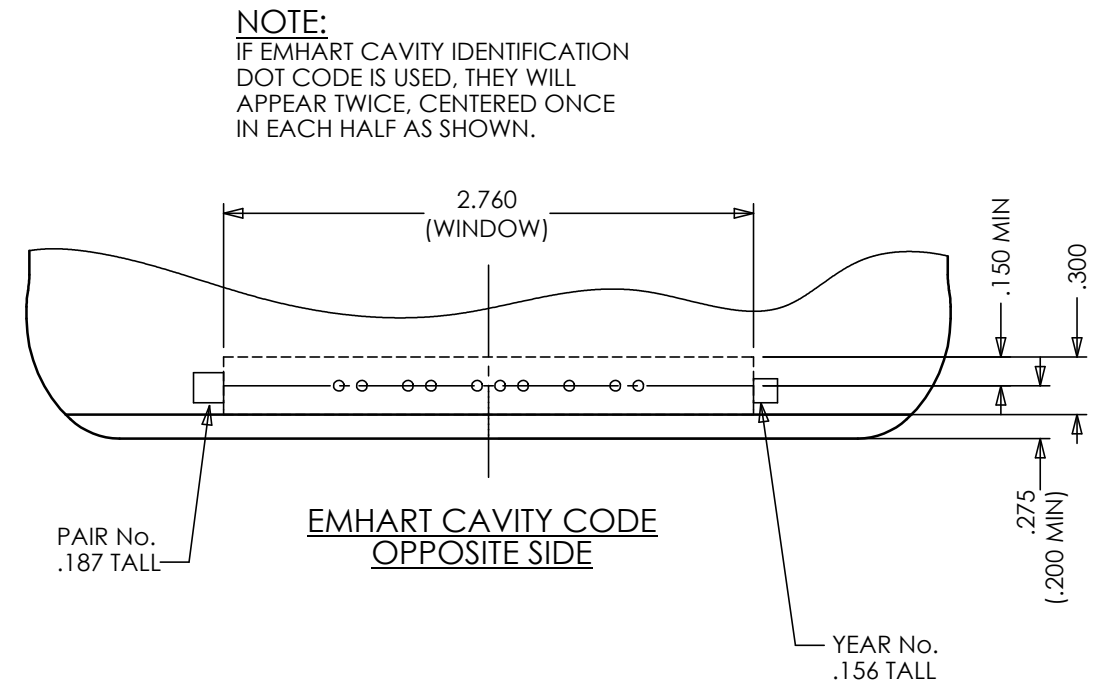


**HEEL LETTERING:** ROUND NOSED STYLE, RAISED .012"

**KNURLING:** FOUR (4) ROWS OF BPK-190 KNURL TO APPEAR ON BEARING SURFACE

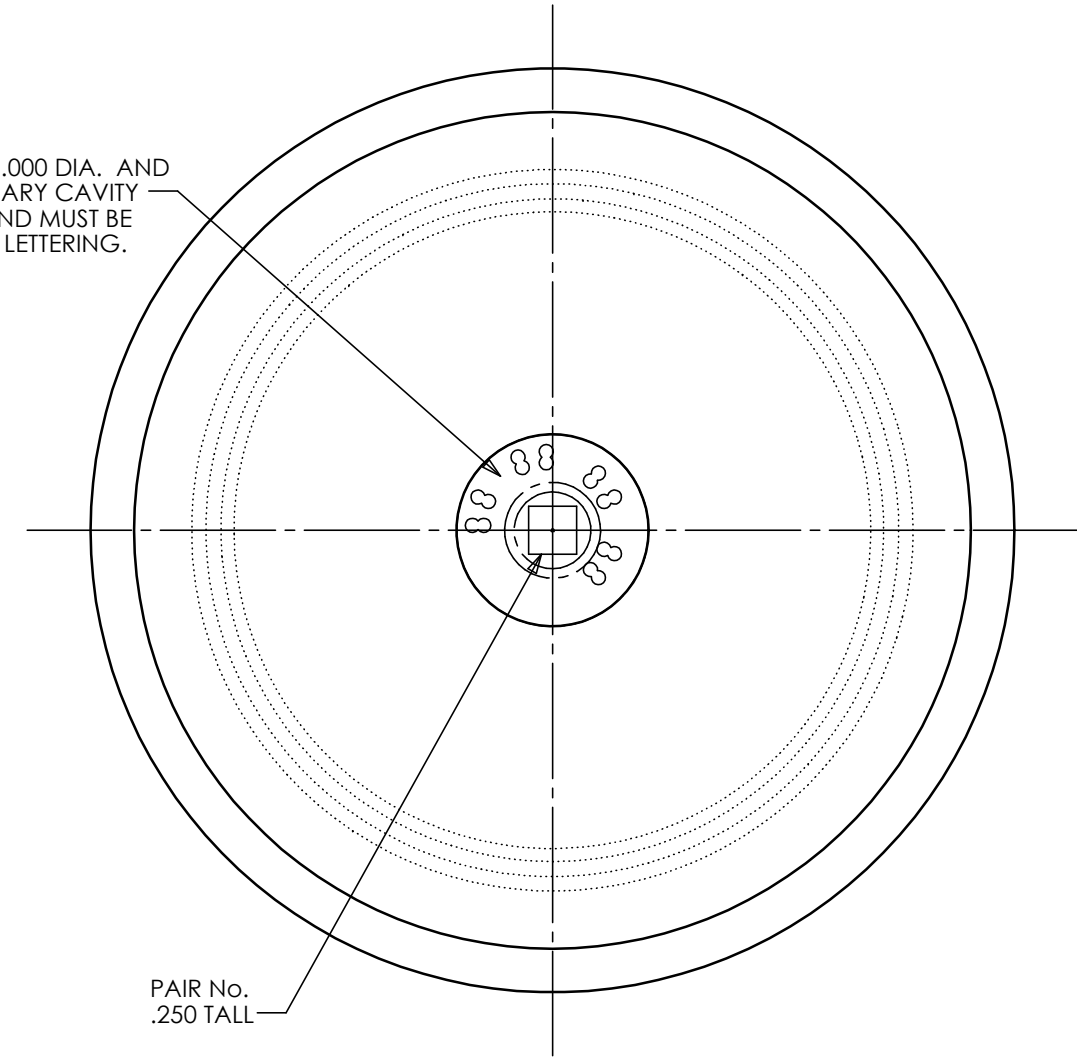
**BOTTOM LETTERING:** ROUND NOSED STYLE

THIS DOCUMENT IS CONFIDENTIAL AND CONTAINS PROPRIETARY INFORMATION AND INTELLECTUAL PROPERTY INCLUDING, BUT NOT LIMITED TO, TRADEMARKS, COPYRIGHTS, TRADE SECRETS, AND KNOW-HOW OF ANCHOR GLASS. THIS INFORMATION MAY NOT BE USED, DISCLOSED OR REPRODUCED, IN WHOLE OR IN PART, WITHOUT THE PRIOR WRITTEN CONSENT OF ANCHOR GLASS. TITLE IN AND TO THIS DOCUMENT AND ALL INFORMATION CONTAINED HEREIN REMAINS AT ALL TIMES IN ANCHOR GLASS.

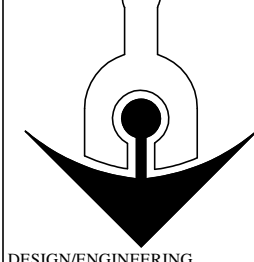


**DETAIL A**  
SCALE 4 : 1

**NOTE:**  
REGION BETWEEN 1.000 DIA. AND .400 DIA. IS FOR BINARY CAVITY NO. CODE ONLY AND MUST BE FREE OF ALL OTHER LETTERING.



**NOTES:**  
OVERALL HEIGHT: 6.313" (160.35mm)  
LARGEST DIAMETER: 4.812" (122.22mm)  
THEORETICAL TIP ANGLE > 37° 11'  
HEADSPACE: 4.3%  
THEORETICAL C.O.G: 2.534" (64.36mm) UP FROM BASE OF BOTTLE



# ANCHOR GLASS

## CONTAINER

TAMPA, FLORIDA

DESIGN/ENGINEERING		DESCRIPTION:	
SIZES & SPECIFICATIONS SHOWN ARE IDEAL ACTUAL SAMPLES WILL DETERMINE SIZES			
SCALE: 1:1	SHAPE CODE: 10	ANCHOR GLASS	
OVERFLOW: 48.000± .500 FL OZS 1419.53± 14.79 MLS		46 OZ PICKLE JAR	
NOMINAL CAPACITY: 46.000± .500 FL OZS 1360.38± 14.79 MLS		ITEM No.: <b>24812</b>	
WEIGHT: 19.718 OZS 559.00 GRAMS		DATE: 5/14/14	
PROJECT No: 20886		DRN BY: S. Thomas	
REFERENCES: 1987002 & 24913		DWG No: <b>B-96834</b>	

REV	DESCRIPTION	DATE	APPROVED
2	REMOVED TENTATIVE NOTE	10/7/14	S.THOMAS
1	ADDED FILL POINT & STACKER DEPTH .054 MAX WAS .047	6/2/14	S.THOMAS
REVISIONS			