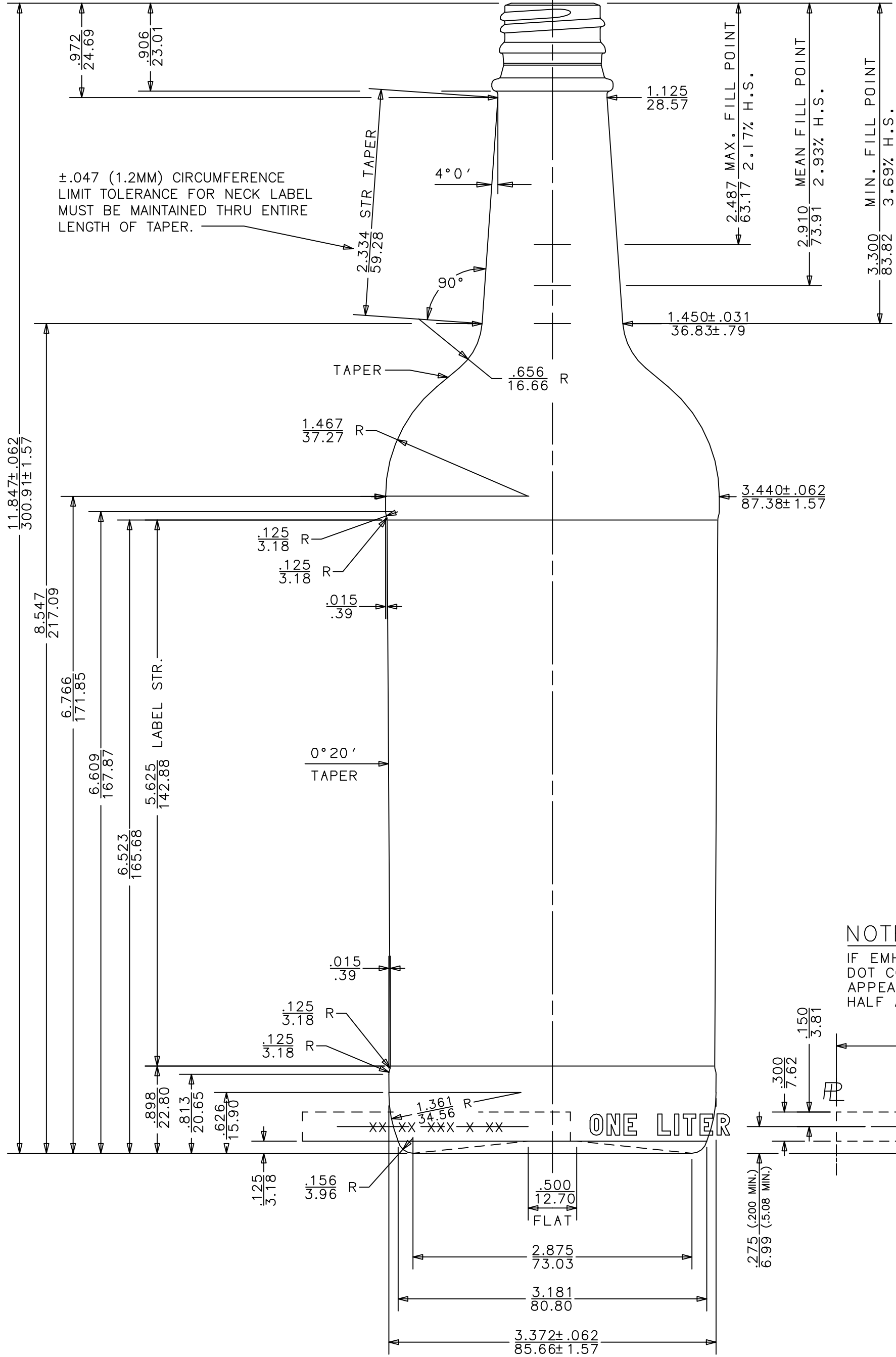


28-3500E
C-87810

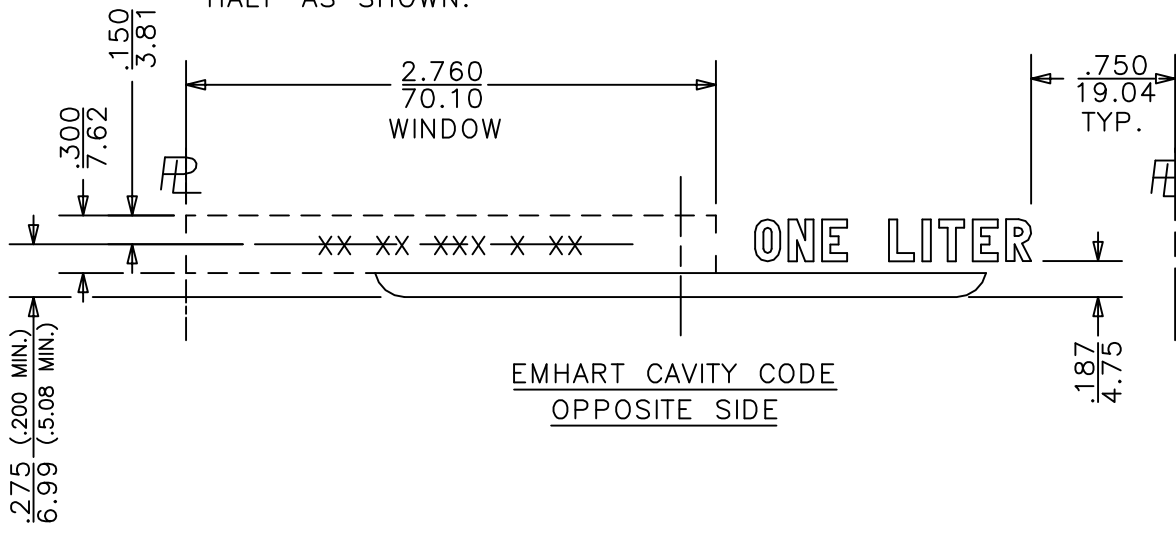


NOTE!
OVERALL HEIGHT ----- 11.847"(300.91mm)
LARGEST DIAMETER ----- 3.440"(87.38mm)
NOTE: THEORETICAL TIP ANGLE > 17°48'.
THEORETICAL C.O.G. = 4.342" UP FROM BTM OF BTL.

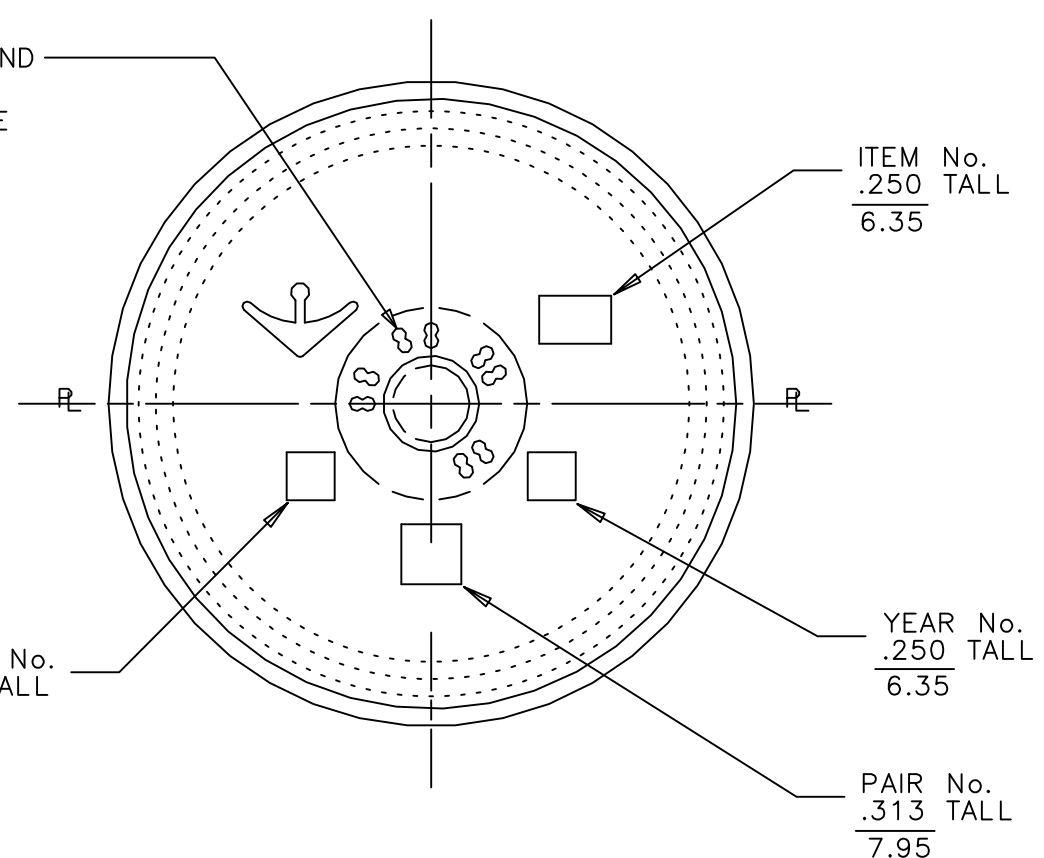
DESIGN/ENGINEERING	TAMPA, FLORIDA
GENERAL SALE	ONE LITER LIQUOR BOTTLE
ITEM No.	934M8A
DATE	6-13-97
DRN. BY	D. B. Holden
PROJECT No.	19554 NNPB
DWG. No.:	B-91703

SIZES & SPECIFICATIONS SHOWN ARE IDEAL - ACTUAL SAMPLES WILL DETERMINE SIZES.	
SCALE: FULL	SHAPE CODE: 10
OVERFLOW: APPROX	34.805 ±.250 FL OZ
FILL POINT OR NOMINAL CAPACITY:	1029.27 ±7.4 ML
FILL POINT OR NOMINAL CAPACITY:	33.815 ±.250 FL OZ
FILL POINT OR NOMINAL CAPACITY:	1000.00 ±7.4 ML
WEIGHT:	16.500 OZ
	467.82 G
9. MODIFIED HEEL - .626 WAS .438 - 1.361R WAS .188R - 3.372 WAS 3.368 - 2.875 WAS 2.807 - 4/9/14 DT	8/9/12 SODE
10. .500 FLAT WAS .750 - ADDED DOT CODING - CAPACITY LETTERING WAS THREE TIMES AROUND HEEL IN RECESSED PANELS.	8/9/12 SODE
11. REMOVED 30-1610 FINISH	8/9/12 SODE
12. WGT WAS 16.00 OZ, REV PER SAMPLING AND PRODUCTION	06/08/12 SODE
13. ADDED 30-1610 FINISH PER CUSTOMER REQUEST	10/08/2003 JLEE
14. INCREASED WEIGHT FROM 15.750 PER PRODUCTION, OPENED DIA'S .004	12/10/2001 DT
15. REVISED FINISH WAS 28-3500X AND UPDATED TITLE BLOCK.	8/22/01 SODE
16. FINISH DESIGNATION WAS ES-90815	7/6/00 SODE
17. O'FLOW WAS 34.981 FL OZ, ADJ HEADSPACE PERCENTS	11/23/98 M.D.C.
18. ADDED ITEM NUMBER & SUPERCEDES NOTE.	

NOTE:
IF EMHART CAVITY IDENTIFICATION DOT CODE IS USED, THEY WILL APPEAR TWICE, ONCE IN EACH HALF AS SHOWN.



NOTE:
REGION BETWEEN 1.000 (25.4 MM) DIA. AND .400 (10.2 MM) DIA. IS FOR BINARY CAVITY No. CODE ONLY AND MUST BE FREE OF ALL OTHER LETTERING.



KNURLING: BPK-190 KNURL TO APPEAR ON BEARING SURFACE.
CAPACITY LETTERING: TO APPEAR TWICE AROUND HEEL AS SHOWN. .218" TALL, ROUND NOSED RAISED .015" MAX.
BOTTOM LETTERING: ROUND NOSED.
TRADEMARK: No. 1

DIMENSIONS ARE SHOWN IN INCHES AND MILLIMETERS (IN/MM)